



# EDUCATION

MODERN SCHOOLIT



November 2018



## AUTOMATION

Seamless synchronisation across systems

## MODERN COMMUNICATION

Meet the students on their platform and strengthen cooperation

## HELP TO SELF HELP

- Make the learning experience engaging with digital tools

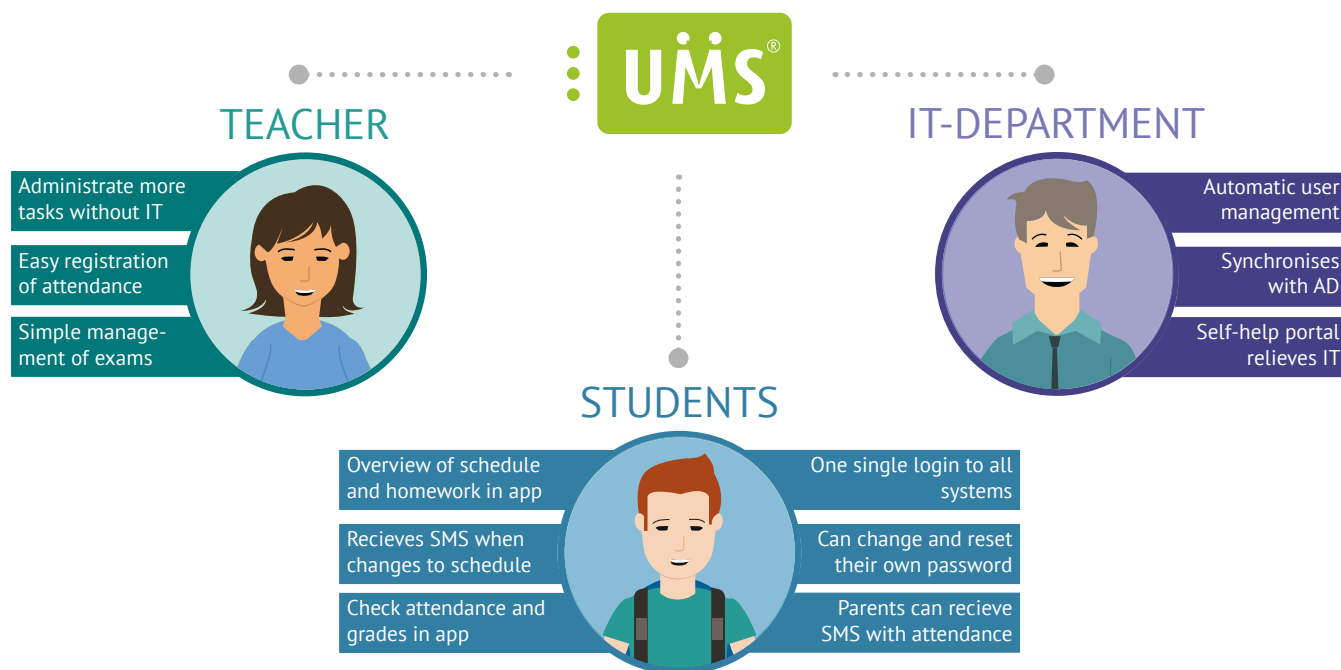
# TABLE OF CONTENTS

What is UMS? .....	1
How the system is built .....	2
<b>BACKEND .....</b>	<b>3</b>
AD Attributes, Exchange Reviewer, Exchange Timetable Blocks, File Server Transfer.....	4
Password Expiration Alert, Power Save, SLI.....	5
<b>OFFICE 365.....</b>	<b>6</b>
Office 365 SharePoint Integration, Office 365 Sync .....	7
Office 365 Teams, Office 365 Timetable Blocks.....	8
Office 365 UMS SharePoint Portal, OneNote Class Notebook .....	9
<b>G SUITE .....</b>	<b>10</b>
G Suite Sync, G Suite Timetable Blocks.....	11
Google Classroom & Sites, Google Drive Integration .....	12
<b>LMS.....</b>	<b>13</b>
Canvas, ElearningForce, Fronter, itslearning .....	14
Moodle Integration, Wizdom .....	15
<b>SELF-SERVICE .....</b>	<b>16</b>
Exam Handling, SSO .....	17
UMS Welcome, Web Timetable.....	18
Advanced CSV Export, Grades, Group Creation, Group Folder.....	19
Guest Users, Homework, Internet Block, IT Rules.....	20
Links, Merge Letters, Multiple Users, Parking .....	21
Password Change, Password Kiosk, Password Self-service, Photobox .....	22
UMS Web, User Info, User Lock.....	23
<b>SMS.....</b>	<b>24</b>
SMS Send .....	25
SMS Send Modules: SMS Alert, SMS Password.....	26
SMS Send Modules: SMS Subscription, SMS Timetable.....	37
SMS Send Modules: SMS Web Service, SMS Welcome .....	28
<b>ATTENDANCE REGISTRATION.....</b>	<b>29</b>
Attendance Registration .....	30
Attendance Registration Modules: Attendance Registration Advanced .....	31
Attendance Registration Modules: Attendance Registration Card System.....	32
Absence registration for employees.....	32
<b>APP.....</b>	<b>33</b>
UMS School App .....	34
UMS School App Modules: App, App & Web .....	35
<b>INTEGRATIONS.....</b>	<b>36</b>
Papercut, Print Payment and Management, TimeEdit, UMS Web Service .....	37
<b>CALCULATE YOUR PRICE .....</b>	<b>38</b>
Price example.....	39
UMS Pricelist.....	40
Module dependencies .....	42
<b>CASE: SAINT IGNATIUS COLLEGE RIVERVIEW.....</b>	<b>43</b>
<b>CASE: ST. FRANCIS XAVIER COLLEGE.....</b>	<b>44</b>



# WHAT IS UMS?

- And how can it help your school?



## AUTOMATIC USER MANAGEMENT FOR THE EDUCATIONAL SECTOR

UMS is short for User Management System and it is a system developed especially for the educational sector.

UMS is a modular standard solution that makes it easy to update and maintain. With the optional modules, UMS can be tailored to your school's individual needs, which means you get a simple and effective solution with everything you need – nothing more, nothing less.

## ONE USERNAME AND PASSWORD

UMS removes hour-long administrative tasks by automatically gathering and updating data from systems, such as Cases21, EduMate, First Class Human Edge, Maze, SEQTA, and Synergetic.

The UMS system generates a database that synchronises information with the other databases, ensuring only one user name is generated for each user, and synchronising it with all systems.

## BUILD YOUR IDEAL SOLUTION

You can build your own solution with our modules. You choose the modules you need and leave the others behind. We believe that is simple and logical.

## WHO CAN BENEFIT FROM UMS?

UMS can help the school's IT department avoid trivial and time-consuming administration tasks, while making life easier for teachers and students.

You can read more about how the IT-department, teachers, and students benefit from UMS on the following page.

## REFERENCES

UMS already has over 600,000 users in more than 500 Danish schools, including secondary schools, colleges, business schools, language centres and more.

Would you like to know which schools already use UMS? Then go to [www.inlogic.dk/en](http://www.inlogic.dk/en) where you can see a full list of all our customers.

Would you like to know more about UMS, please visit [www.inlogic.dk/en/#video](http://www.inlogic.dk/en/#video).

# HOW THE SYSTEM IS BUILT

Different user interfaces for different users

UMS consists of two parts; a frontend part and a backend part. The backend part is for the school's IT department and this is where you can decide how you would like to create and maintain your users, through the UMS configurator.

This is also where you can choose to integrate to Office 365, Canvas, Fronter, Exchange, Google Apps and many others.

The frontend part is a self-service portal primarily for teachers, administrative staff and students.

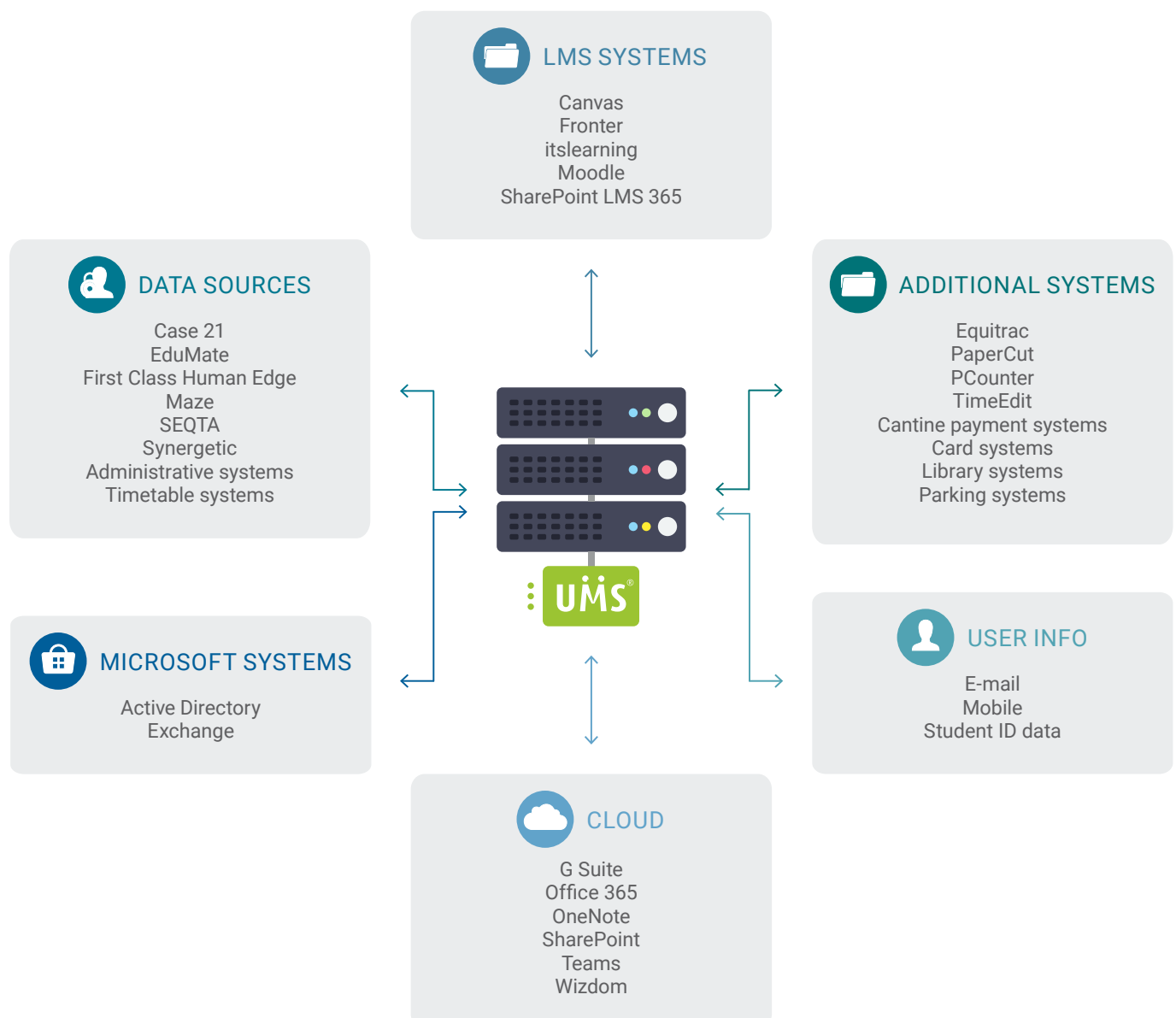
In the portal, teachers can register attendance, reset a student's passwords, send SMS messages to students, block the internet, print merge letters, create guest users and much more.

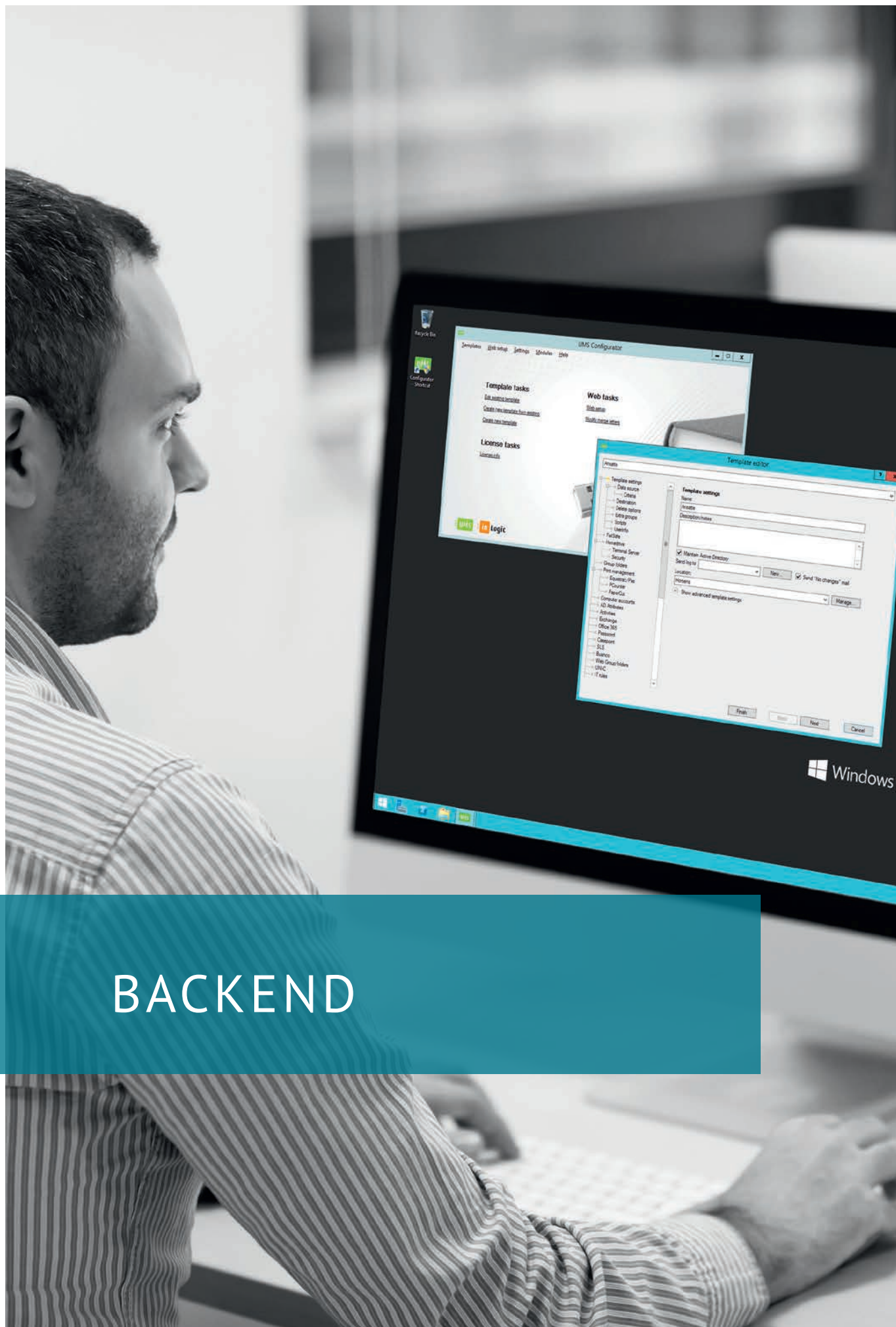
Students can change their contact information, see their timetable, change their own password etc., depending on which modules the school has bought.

## UMS INTEGRATIONS

If you would like to know which integrations are available for other systems, please do not hesitate to contact us.

Contact us at [sales@inlogic.dk](mailto:sales@inlogic.dk) or call us at +45 42 40 88 00.





# BACKEND

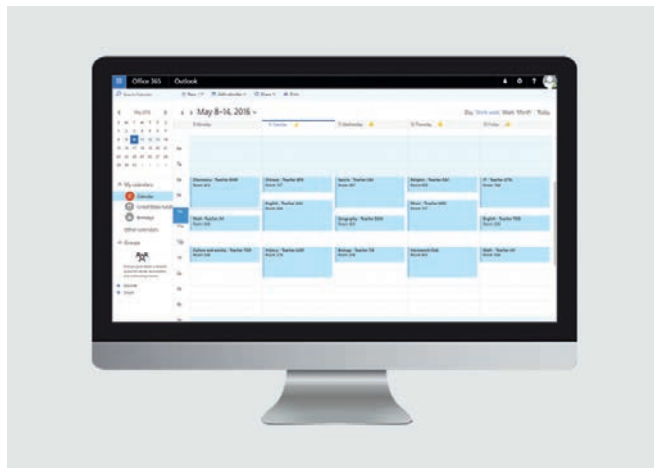
## AD ATTRIBUTES



The module makes it possible to link information from the administrative system with the AD, so information is automatically filled into the the AD and the IT department avoids having to enter it manually.

Alternatively, the module can extract static data and use them in the AD. If you use other systems, which look into the AD, e.g. IP-phones and copy machines, you will benefit from having AD Attributes.

## EXCHANGE REVIEWER

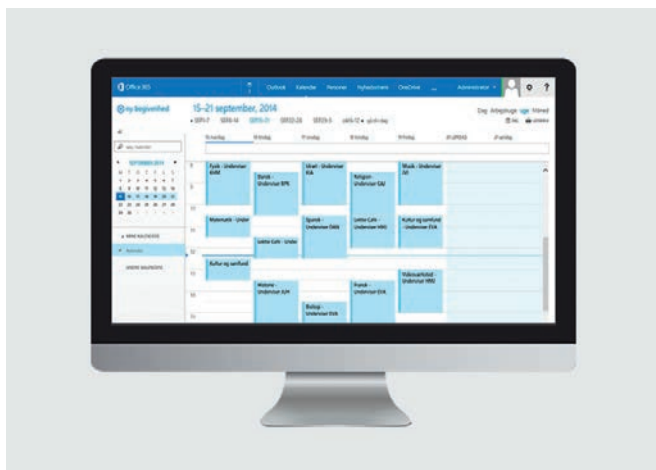


With Exchange Reviewer the school can set the users reading permissions for the Outlook calendar quickly and easily.

Exchange Reviewer can automatically set the reading permissions for both individual users as well as user groups, so the school does not have to set them manually.

By automating the configuration, new employees will for instance not have to ask their colleagues for permission to view their calendars.

## EXCHANGE TIMETABLE BLOCKS

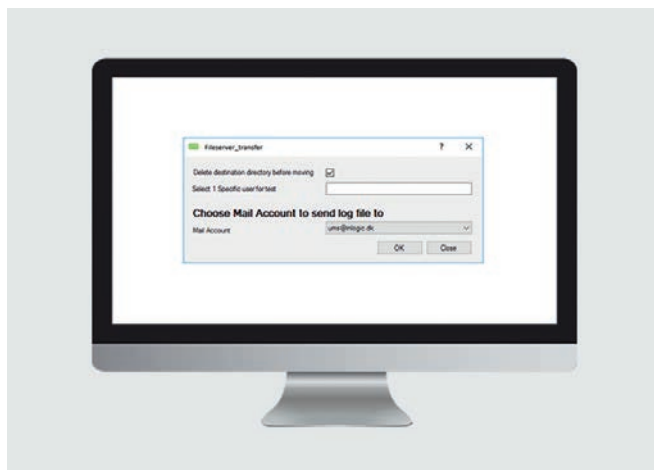


This module automatically creates timetable blocks for employees, students and rooms, based on your administrative system, so they are visible in Outlook. The rooms are created as room-resources.

It is possible to synchronise Exchange with a smartphone, so the phone's calendar is automatically updated. This way the user always has an up-to-date calendar nearby.

Is it possible to colour timetable blocks that originate from the administrative system, making it easy to distinguish the school's timetable blocks from your personal appointments.

## FILE SERVER TRANSFER

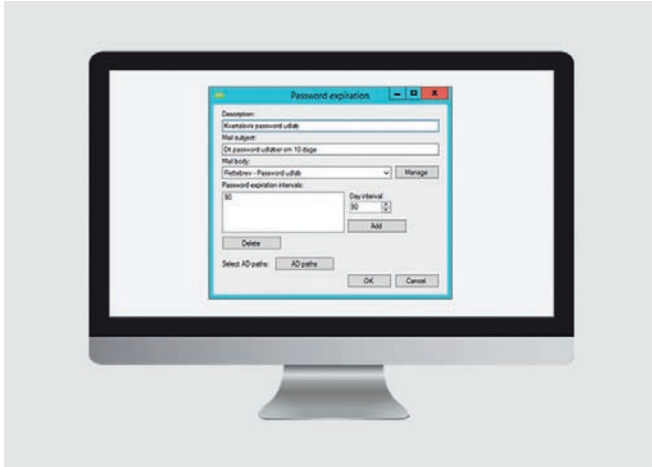


File Server Transfer is developed for schools, which want to save resources and avoid having to move data between servers manually.

The module automatically moves Home Directory and Profile Directory between servers, so the data follows the users, e.g. if they change location.

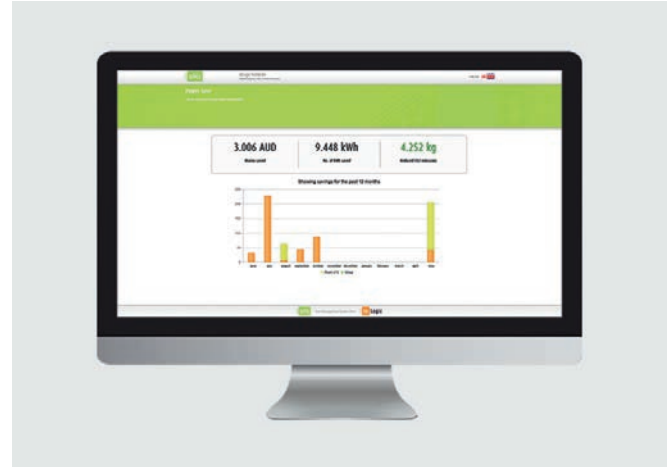
This is an advantage when teachers move to a different department or when students move to one of the other educational programs offered by the school.

## PASSWORD EXPIRATION ALERT POWER SAVE



This module alerts students and staff when it is time to renew their password to the school's IT-system. This is a particular advance for users who bring their own devices, which are not on the school's network and thus do not get pop-ups when their passwords expire.

With the reminder, users change their passwords in time and thereby avoid getting their accounts locked. This means that fewer will have to visit the IT-department to get their accounts reopened. You decide what the alert should contain, as well as when the alert should be sent. It is possible to set different intervals for each organizational unit.

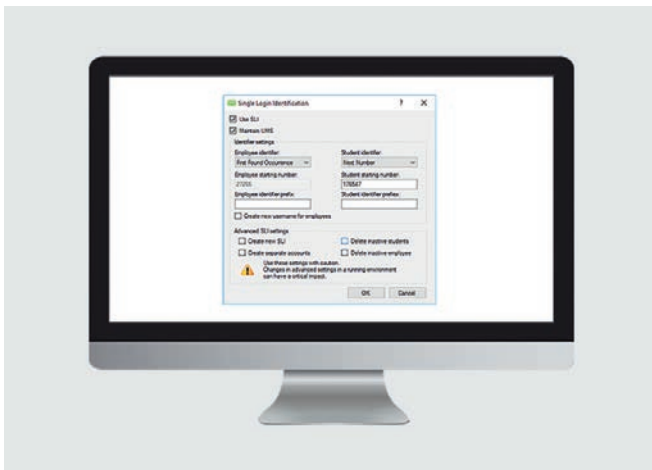


Power Save reduces the school's electricity expenses and CO2-emissions, without influencing the school's service to students and staff.

Power Save can automatically turn off computers, which have not been used in a while. You decide which computers Power Save is allowed to turn off and when. It is possible to use different settings for different departments.

By customising the settings, you can avoid that students and staff, who work on the school's computers and sign off to have lunch, lose their work because the computer switches off.

## SLI



The Single Login Identification (SLI) module is developed for school, which want to avoid users having several user accounts for the school's different databases.

The module gives users one single AD user account, which can be used across various databases.

This is an advantage, for instance when a user attends more than one school within the same IT-community, because the user can use the same login everywhere.

## OTHER MODULES

We have more backend modules than those displayed here. They are described in the section called Integrations on page 36-37.

For instance, you can read more about UMS Web Service on page 37.

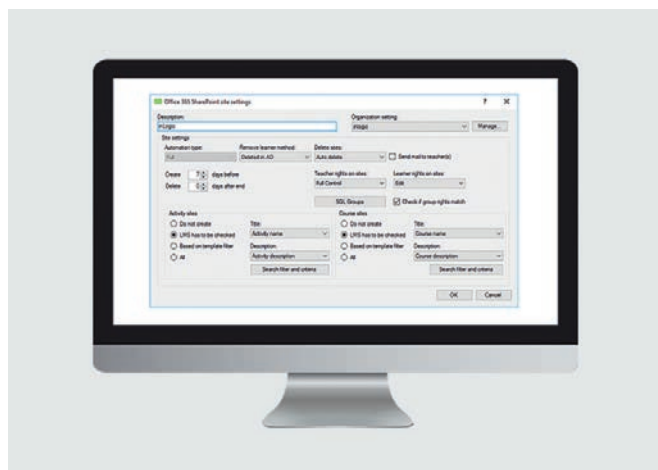






OFFICE 365

## OFFICE 365 SHAREPOINT INTEGRATION



Our Office 365 SharePoint integration is developed for schools, which want to avoid manual administration tasks when they start using SharePoint in Office 365.

The integration gets you off to a good start, when you start using SharePoint, regardless if you make your own SharePoint portal or if someone else makes it for you.

The integration automatically creates and maintains teachers and students as users in SharePoint, based on data from UMS. The integration can also create and maintain rooms, based on classes and activities.

In other words, the integration saves you time when you start using SharePoint, as well as when SharePoint is maintained.

### BENEFITS OF INTEGRATION TO OFFICE 365 SHAREPOINT

- Automatic creation and maintenance of users and room
- It is possible to make different templates for different courses
- Fewer administrative tasks for the IT-department, who can focus on other tasks instead

## OFFICE 365 SYNC



With our Office 365 Sync module, you can integrate your student administration system with Microsoft's cloud-based solution, Office 365, automatically.

By doing this, the integration automatically creates and maintains users in Office 365, making Office 365 Sync a useful tool for IT-departments wanting fewer manual tasks.

With ADFS, Office 365 Sync can synchronize the students' usernames and passwords with their AD login, so they only have one username and password for all of the school's IT-systems.

### BENEFITS OF OFFICE 365 SYNC

Office 365 quickly pays for itself because it:

- Automatically creates and maintains users in the cloud
- Automatically synchronizes usernames and passwords with the AD login
- Automatically creates users in Azure AD
- Automatically sets language and license settings
- Makes it possible to make security groups, e.g. based on classes
- Makes it possible to choose which functions are active in Office 365, e.g. Skype and Yammer

Please note: The module itself does not require ADFS or Dir Sync. ADFS is only necessary if you want passwords to synchronize from Office 365.

## OFFICE 365 TEAMS



Microsoft Teams consolidate all the well known functions from Office 365 in one digital hub. Teams is an ideal tool for teaching and learning with a abundance of possibilities for collaboration.

Teams makes it easy to keep overview and manage the class' work procedures. With rooms for class collaboration, there are rich opportunities to communicate quickly and structured. OneNote Class Notebook is integrated in each classroom, making it easy for teachers to produce and organise teaching materials directly in Teams.

All other Office 365 apps are also available in Teams. This makes it even easier to collaborate and share e.g. Word documents, PowerPoints, Excel sheets, etc. teachers can create motivating and entertaining content by adding other apps, involve conversations, videos, etc. This encourages students to participate, as well as gives them opportunity to be seen and heard.

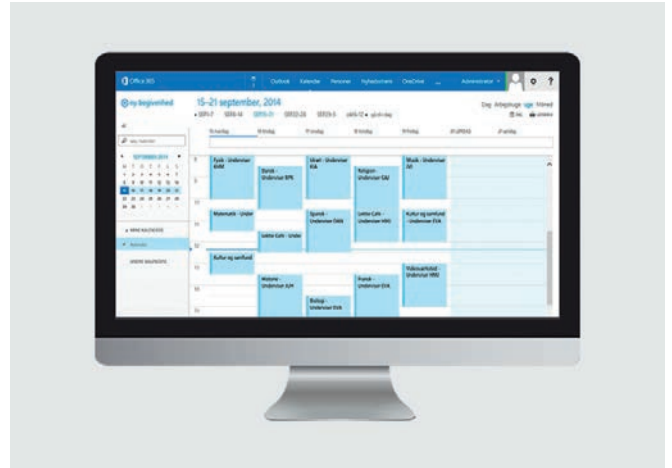
Microsoft Teams can be used for other than class collaboration. It supports every form of collaboration and opens up to new ways of communication across the school.

### INTEGRATION WITH TEAMS

Our Teams integration is developed for schools that wish to avoid manual setup and administration. We automatically create students, teachers, employees, classes and courses, and administrate them.

If you want to learn more about the module, please contact us on phone no. +45 42 40 88 00 or write us an email at [sales@inlogic.dk](mailto:sales@inlogic.dk).

## OFFICE 365 TIMETABLE BLOCKS



This module creates timetable blocks in Office 365 for staff and students, making them visible in the calendar.

Rooms are created as room resources. This way users can see if the rooms are available and send a booking inquiry to the administrative staff.

Users can access the calendar via their web browser and synchronize it to a smartphone, so they always have an up-to-date calendar within reach.

The module creates, structures and maintains timetable blocks based on data from the student administration system.

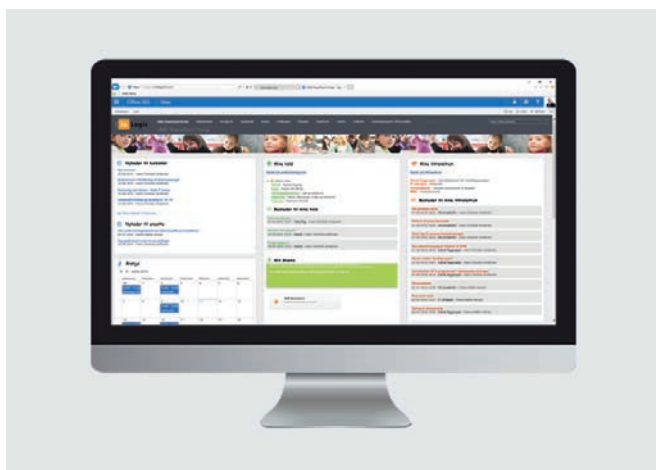
Is it possible to colour timetable blocks that originate from the administrative system, making it easy to distinguish the school's timetable blocks from your personal appointments.

Through this module, users can see group names, rooms, teachers and homework (add-on) etc. via web.

### BENEFITS OF OFFICE 365 TIMETABLE BLOCKS

- Happy users, because the timetable makes it easy to stay up to-date with changes
- The timetable can be synchronized to a smartphone, making it accessible when and where the user needs it
- Less administration for the IT-department
- Faster configuration so you can start using Office 365 more quickly
- Calendar activities are created in the cloud, instead of on your own servers

## OFFICE 365 UMS SHAREPOINT PORTAL



Our Office 365 SharePoint Portal is a dedicated solution for school, which want an easy-to-use learning portal. Students and teachers are often presented with advanced and complex solutions that does everything they need and then some and as a result, they are difficult to use.

The portal is simple and easy to use. This way you avoid confusion and having to navigate yet another complex system.

In terms of design, you have two options: the portal can use our standard skin, as pictured above, or our second skin, which we made for primary schools.

### TEACHING ROOMS

Rooms are created by UMS. A teaching room contains everything connected to a course. As standard, a room will have messages, assignment folder, links, video portal, work schedule, debate forum, teaching documents, and shared documents.

### THE SCHOOL GETS A FULLY FUNCTIONAL INTRANET

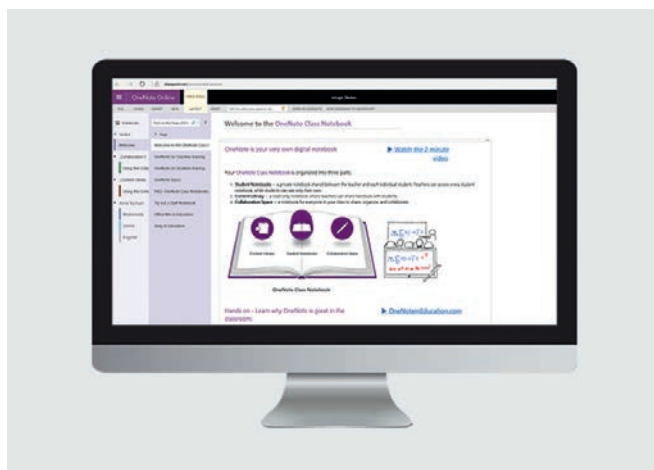
The school creates its own rooms in the intranet. It is possible to create rooms for teachers, for example a room for all French teachers. Likewise, it is possible to create rooms for students, for example a room for a given class.

Among other things, the school can create group rooms and rooms for teachers, publish news, display 'my' rooms and message board on the front page, add users to a room, and create a link collection.

### MORE FUNCTIONS

Office 365 UMS Sharepoint Portal offers more than described. For more information about the possibilities, contact us on phone no. +45 42 40 88 70 or email [sales@inlogic.dk](mailto:sales@inlogic.dk).

## ONENOTE CLASS NOTEBOOK



Our OneNote Class Notebook integration is developed for schools, which want to avoid manual configuration and maintenance when using OneNote Class Notebook.

The integration automatically extracts data from your student administration system and synchronizes it with OneNote Class Notebook, creating Notebooks for students and teachers. This makes it very easy to start using the learning tool in class.

Once the configuration is done, teachers and students will get access to a wide range of useful tools.

Your OneNote Class Notebooks can be created before the school year starts, giving teachers the opportunity to prepare themselves and upload materials at their own pace. If new students start after the school year has begun they too are automatically created and maintained in OneNote Class Notebook.

### OPTIONS IN ONENOTE CLASS NOTEBOOK

OneNote Class Notebook can be used to distribute handouts to the students digitally. It can be used as a library of teaching materials, as well as a place to give students assignments and make quizzes.

The benefit of making quizzes and giving homework directly in OneNote Class Notebook is that the teacher can follow the students' progress. The teacher can see how the students work and how much they have done. They can even write comments to students directly in the homework section.

Teachers can also give feedback and grades directly in OneNote Class Notebook, once the quiz is done or the homework is handed in.





G SUITE

## G SUITE SYNC



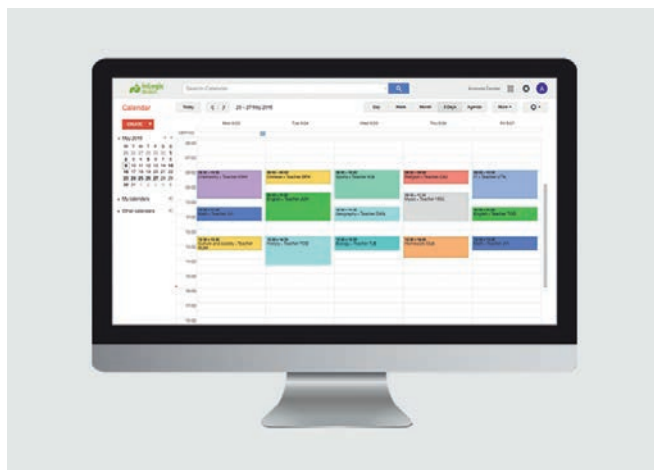
UMS integrates to G Suite with the module G Suite Sync. The module creates, maintain, and delete users and their e-mail accounts in G Suite.

All data changes are synchronised to UMS, e.g. passwords. This ensures that users can use the same password both for UMS and G Suite.

### INTEGRATION TO G SUITE QUICKLY BECOMES PROFITABLE

- Avoid having to program scripts to synchronise the data
- Users are automatically created with data from your student administration system
- It reduces the workload for the IT-department

## G SUITE TIMETABLE BLOCKS



G Suite Timetable Blocks is developed for schools, which want to reduce the number of manual tasks connected to using G Suite.

The module automatically creates and maintain the users' activities in Google Calendar, making sure the timetables are always up-to-date. The data can be synchronized to a smartphone, so the user always has an updated calendar within reach.

### INTEGRATION WITH G SUITE TIMETABLE BLOCKS QUICKLY PAYS FOR ITSELF

- The set-up is done automatically based on data from the student administration system
- As everything is done automatically, the workload for the IT department is reduced
- If a teacher has registered homework for a subject, it is visible in the calendar

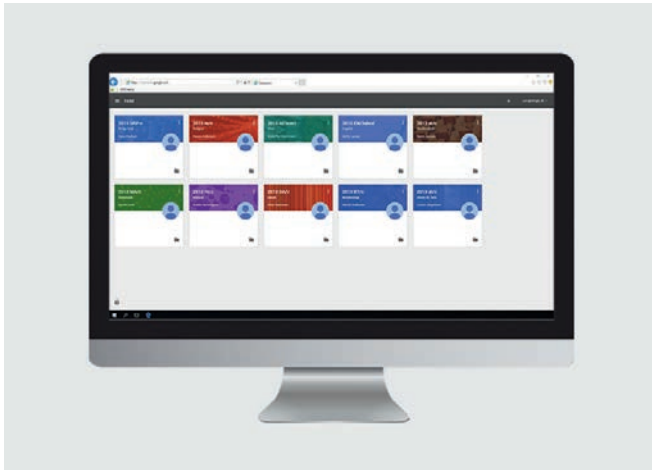


“

We have **saved a lot of time** with UMS. We can now spend our time on other relevant IT tasks, as it **no longer is necessary to spend time on administration of users and groups**. This also means that we do not need support from external IT companies anymore. And we **save a lot of money every year**.

Lilly Nielsen  
IT-Consultant  
KOLDING HF & VUC

# GOOGLE CLASSROOM & SITES



We have developed an integration, which makes it easy for you to start using the Google Classroom learning portal and the Google Sites website tool.

The integration automatically creates and maintains users and rooms in both Google Classroom and Google Sites, based on data from your students administration system.

Users are automatically assigned to the correct rooms and sites and given the correct permissions.

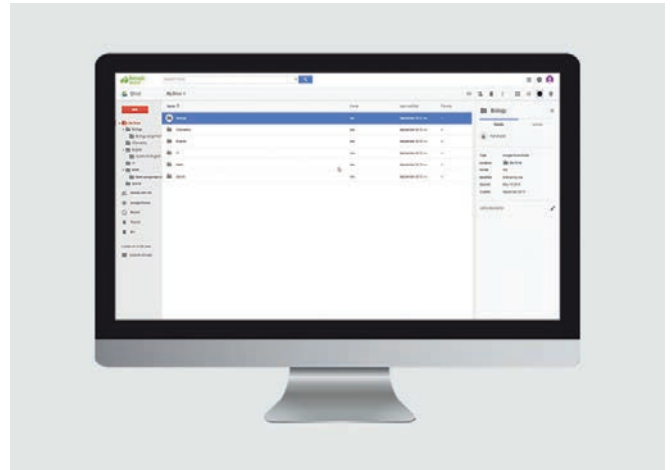
If changes occur, e.g. because a student leaves a class or a new student joins an existing class, Google Classroom and Sites it updated automatically.

It is possible to create class sites, group sites etc. in Google Sites based on a template, just like it is possible with rooms in Google Classroom.

Because so many tasks are automated, the IT-department's workload is reduced. But more importantly; it is easy to start using Google Classroom and Sites.

This integration runs as a web service.

# GOOGLE DRIVE INTEGRATION



Google Drive is a popular Cloud Storage Service, which is free for the school to use. With Google Drive you can store and work with files in the cloud, making them accessible wherever you are.

But what happens when an entire school or an IT hosting centre moves to the cloud? The IT department gets a wide range of new administrative tasks, which require attention and need to be prioritized.

Before you can start using Google Drive, users, groups, subjects etc. need to be set up and structured. After that, there is the on-going maintenance.

## GOOGLE DRIVE INTEGRATION QUICKLY PAYS FOR ITSELF

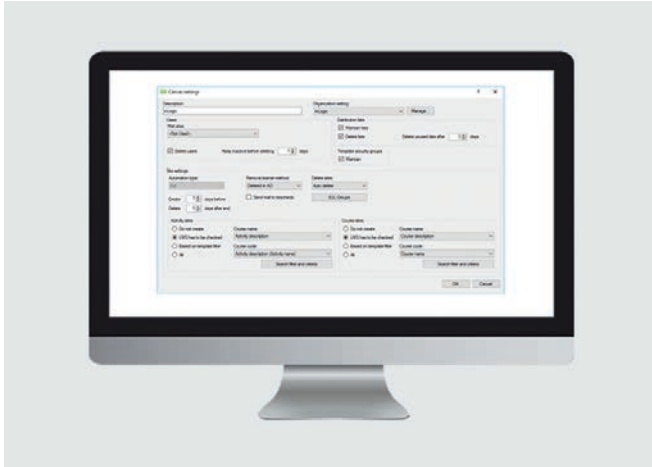
- Drives, shared drives, class drives etc. are created and maintained automatically
- The folder structure is created and maintained automatically Folders are organised by groups and subjects.
- There are dedicated assignment folders, which makes it easy to hand in assignments
- Users are granted access and permissions to the relevant groups and subjects
- The automated processes reduce the IT department's workflow

A black and white photograph of a woman with her hair tied back, smiling as she looks at a laptop. She is wearing a dark blazer over a striped collared shirt. Her hands are on the laptop keyboard. The background is a bright, out-of-focus office space. A teal-colored rectangular overlay is positioned in the lower-left quadrant of the image, containing the text 'LMS' in white.

LMS



## CANVAS



Our Canvas integration automatically creates and maintains users in Canvas, based on data from your student administration system.

Additionally, it creates and maintains rooms and e-mail distribution groups, which teachers and students can use for teaching purposes. This automation saves you time and prevents typing errors in the system.

The integration runs as a web service and can therefore execute tasks on the fly.

## ELEARNINGFORCE



Our Elearningforce SharePoint LMS integration automatically creates and maintains data in SharePoint, based on data from your student administration system.

It automatically creates and maintains teams and sites, as well as teachers and students on sites. It supports templates and it is up to you to decide when a site becomes visible.

It is possible to make different settings for different courses or branches of study.

## FRONTER

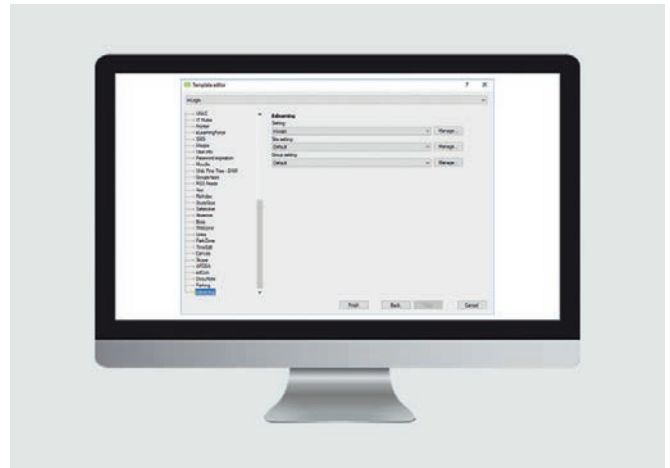


This integration automatically creates and maintains users in Fronter, based on data from your student administration system. Additionally, it creates rooms, which teachers and students can use for teaching purposes.

Our Fronter integration automatically maintains and deletes room, which are no longer in use. This automation frees up time which can be used on other tasks.

The integration runs as a web service and automatically synchronizes passwords, so students only need one password for the school's IT-system.

## ITSLEARNING



With our itslearning integration, schools are spared many dull and time consuming administrative tasks. The integration ensures that users and group rooms are created, administrated and deleted based on data from the student administrative system.

UMS supports the hierarchical structure of itslearning, where classes, administration, etc. are added under the school's hierarchy.

Coming soon: The possibility to create rooms and groups based on different templates.

## MOODLE INTEGRATION

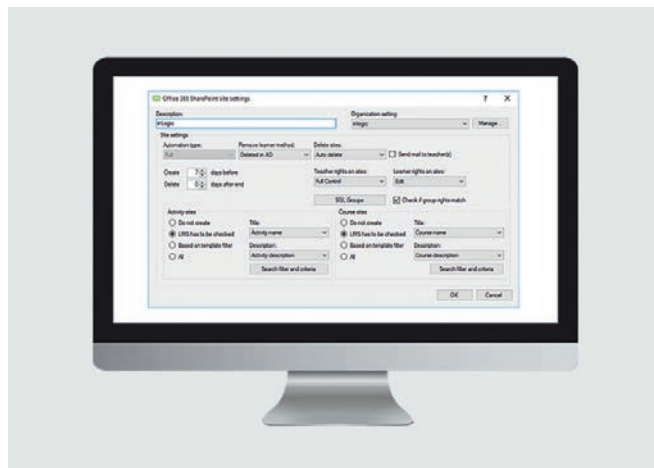


The integration automatically creates, maintains and deletes users, based on data from your student administrative system. It also creates and maintains group rooms, which teachers and students can use for teaching purposes. Rooms that are no longer in use are deleted automatically.

It is also possible to upload pictures of the users to Moodle, making it easy for teachers and students to see whom they are interacting with.

The Moodle integration gives you an easy overview and ensures that the users' data is always managed correctly, without requiring any manual updates.

## WIZDOM



This integration makes it easy to start using Wizdom's SharePoint solution, because it automatically creates and maintains teachers and students as users in SharePoint, based on data from UMS.

It also automatically creates and maintains rooms, based on classes and activities. This automation frees up time with you start using Wizdom's SharePoint solution, as well as when the solution is maintained.

It is possible to make different templates for different courses.

“

We chose UMS because the system has given us **an easy way to administrate user creation** for our many thousands students, course participants, and employees in our different systems.

UMS ensures that we **automatically create and delete users in our AD**, assign security groups, distribute licenses in Office 365, and give access to our teaching materials on our Moodle servers.

Stephen Svendsen  
System Administrator  
IBC





## SELF-SERVICE

## EXAM HANDLING



With Exam Handling, all permissions to the exam are controlled automatically, making sure students only have access to the drives and/or internet that relevant to them during the exam.

For instance, it is possible to give students access to a designated exam folder, to which the teacher has uploaded relevant materials. This makes preparations and the exam itself run smoothly.

Through the module, the school's administrative staff and teachers can handle a long list of tasks related to the exam, without having to involve the IT-department.

The only thing the IT-department has to configure are the groups of people who can access the Exam Handling module.

### BENEFITS OF EXAM HANDLING

- Access to a designated exam folder containing files to be used during the exam
- Access to home drives/ shared drives if required
- Access to a designated printer
- Block the internet during the exam, either entirely or partly.
- Students use the same login as they always use
- Reduces the number of administrative tasks and thereby saves the school time and resources
- Exams are put in system, which gives staff an easy overview
- Students have to accept the school's IT policy in order to start their exam
- Exams are easily removed once they are completed, to avoid clutter in the system
- Avoid stress before the exam, preparations can be made in due time.

## SSO



Our Single Sign-on (SSO) module is developed for schools, which want to make it easy for students and teachers to use the school's different electronic systems.

With SSO, each user gets one login and password, which logs them into all the associated services at once.

For example, students can access the school's learning management system, online dictionaries and databases with scientific publications – all by logging in with SSO once.

It saves time and hassle every time a user uses one of the school's systems.

Additionally, it makes life easier for the school's users, as they avoid the frustration of having to remember multiple logins.

### COMPATIBILITY

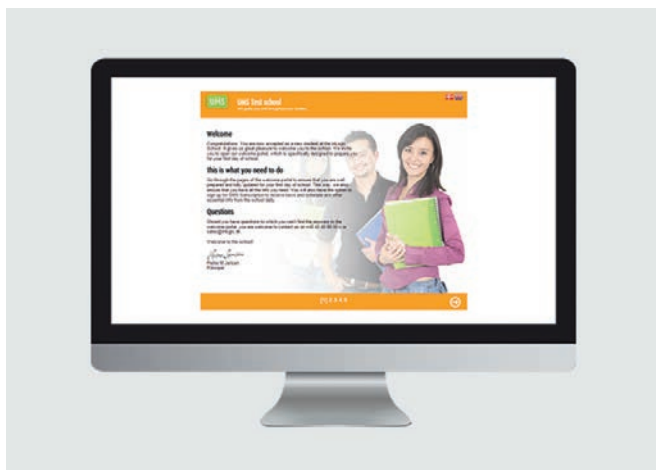
The SSO module works with all systems using the SAML2 protocol, e.g. ADFS servers.

### DEPENDENCIES

In order to get full service against other services, the SSO module requires an ADFS server. Additionally, you need the UMS Web module.



## UMS WELCOME



UMS Welcome makes it easy to gather all relevant information for new users in one place, helping students to get off to a good start.

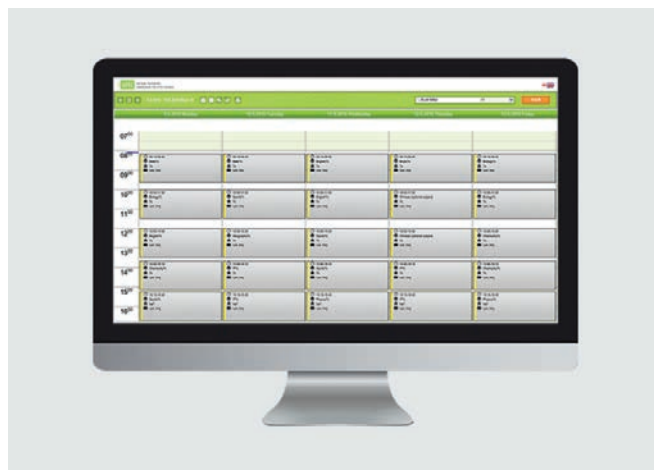
With a WYSIWYG editor (what-you-see-is-what-you-get), the school can easily target the welcome to make it relevant for users and create a sense of affiliation. The welcome portal can be designed by the school or predefined templates, so new students are introduced to the most important information.

For instance can the welcome portal show new users e.g. five pages. The five pages could be a welcome to the school, acceptance of IT rules, registration for digital services, update user info and change password, introduction to the school's video, and direct link to the school's IT-systems.

### BENEFITS OF USING UMS WELCOME

- It is not possible to skip pages in the welcome portal. This ensures that the users are presented with all the relevant information
- Users are introduced to the school's technology, for instance the UMS School App
- Users can subscribe to SMS services
- Users can change their password, without involving the IT department
- It is possible to set up several welcome portals tailored to different study programmes
- The user must accept the school's IT rules in order to continue
- You avoid having to print and mail physical welcome letters
- The welcome portal is designed to fit all browsers

## WEB TIMETABLE



Web Timetable is an add-on module for UMS, which gives you timetables for students, teachers, rooms and classes in a simple web interface.

Timetable changes are extracted from UMS, which means that the timetables are always up to date. However, timetable is not the only thing this module gives you. The module gives access to other options, giving you even more benefit from UMS.

### BENEFITS OF USING WEB TIMETABLE

- Users can choose if they prefer to see their timetable for 1 day at a time, pr. school week (5 days), pr. week or pr. month
- Teachers can write notes and homework (add-on) for each class, making it easy for students to see what they need to prepare for next class and for instance if there is something they need to bring. It is possible to show homework registered in other systems too
- Teachers can send our SMS texts to students e.g. in case there are important information they need to get (requires the module SMS Send)
- Teachers can print class lists and timetables to students. This is particularly helpful for students in short courses or course participants (requires the module Merge Letters)
- Teachers can block students' internet access, e.g. during a quiz (requires the module Internet Block)

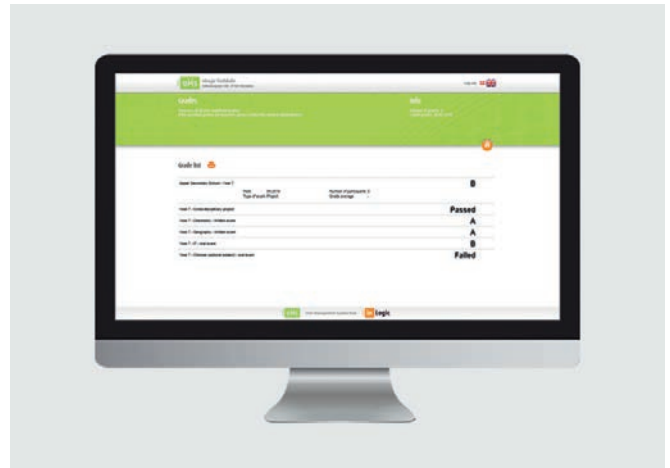
## ADVANCED CSV EXPORT



With Advanced CSV Export, exporting relevant data from UMS as a CSV file is easy and hassle-free. The module enables you to choose the data you want to export and in the order you prefer, making sure you get exactly the data you need. This way you can import the data directly into a range of different programs and databases, e.g. library systems etc.

In other words, you avoid the problems that often arise with regular CSV export, when you need to transfer large quantities of data between databases and programs, which are not directly connected.

## GRADES



With Grades, students are able to see their grades as soon as they are released. This saves them having to wait in front of the school's noticeboard or update the school's website again and again, until the grades are available.

The module automatically extracts all grade information from the student administration system.

The module can be used in UMS Web and UMS School App.

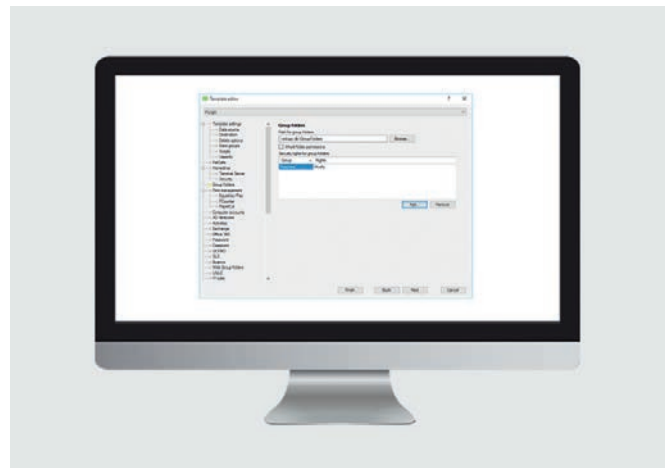
## GROUP CREATION



Group Creation enables your students and staff to create user-defined groups, e.g. for projects and cross-disciplinary teamwork. Because the users can do this themselves, the workload in the IT department is reduced.

Users can easily name groups and add the members they want to include. Afterwards, the groups are created, based on data from the student administration system. When groups are created, they automatically get a group folder and a distribution group, which enables them to work together across classes, departments and year groups.

## GROUP FOLDER

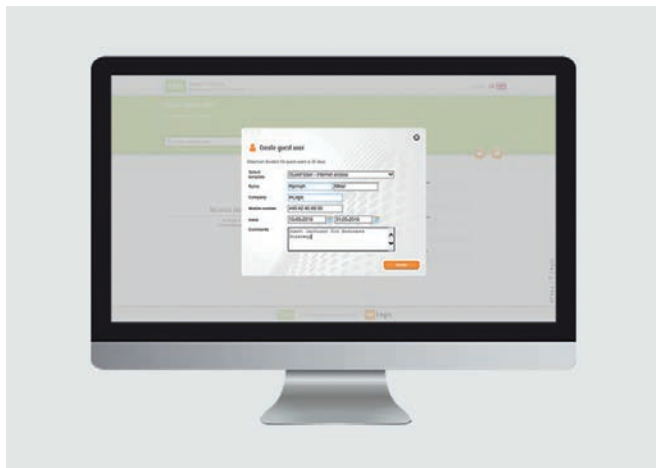


With Group Folder, you can automatically create and maintain group folders for the school's users by creating activities from the student administrative system as folders on a file server.

This way every class, group and activity gets a folder, which the users can use to store and share course-related files.

By automating the creation and maintenance of group folder, you save time and reduce the workload for the IT-department.

## GUEST USERS



With the Guest Users module, the school can welcome and manage individual, temporary users more efficiently.

The module makes it easy for the school's staff to create named temporary users. Everyone with the appropriate rights can create temporary users, without assistance from the IT department.

Once the temporary user is created in the system, he or she will receive an SMS with containing the new username and password.

## HOMEWORK

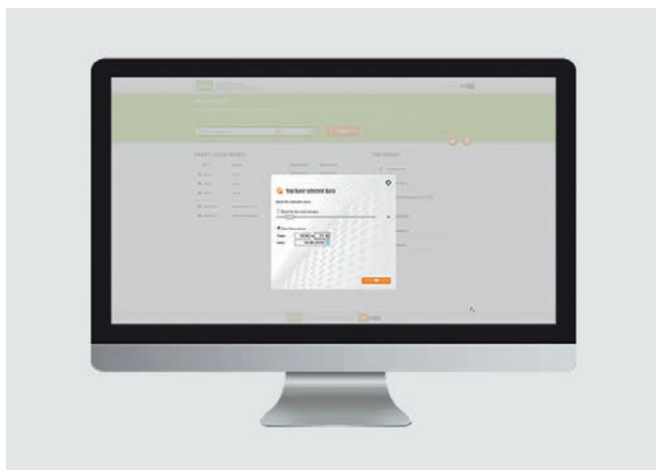


With this module, students can easily get an overview of their homework. The homework is shown as notes on each of the classes in the student's timetable.

Homework is automatically sent to all other places, where the students can see their timetable; e.g. in Office 365 and Google Apps, as well as the Timetable function in UMS School App.

The module can be used in UMS Web and UMS School App.

## INTERNET BLOCK

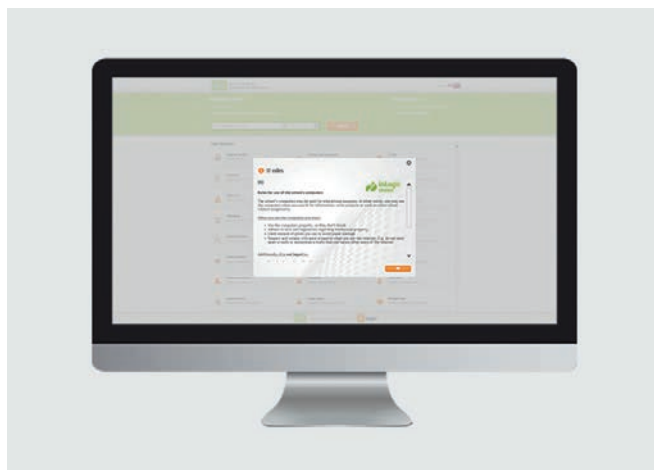


The module Internet Block makes it easy for teachers - as well as others with the appropriate rights - to block internet access for individual students or entire classes.

It is useful during classes, in order to help the students focus more as well as during tests and quizzes.

The module gives teachers more freedom to plan lessons, as they want to. E.g. if the teacher wants to make a spontaneous, unaided test, he or she can do so without much planning and without the assistance of the IT-department.

## IT RULES

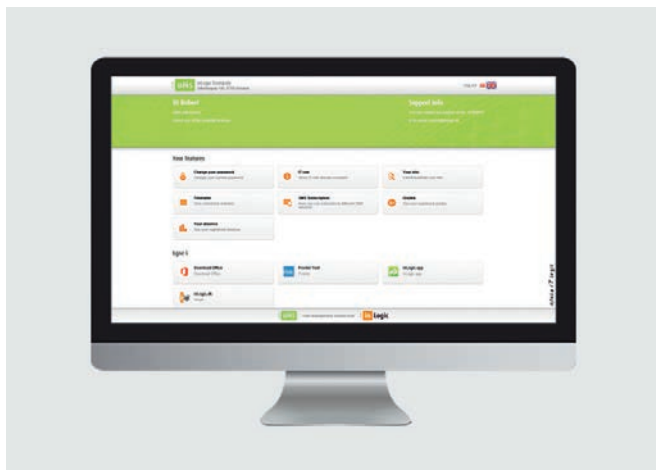


With IT Rules, it is easy to make students and staff accept the school's IT policy digitally.

By doing it digitally, it is easy to document and get an overview of who has accepted the policy and who still needs to do it.

The module can make the school's WIFI inaccessible, if the user has not accepted the IT policy. Furthermore, you decide when and how often the module should appear.

## LINKS

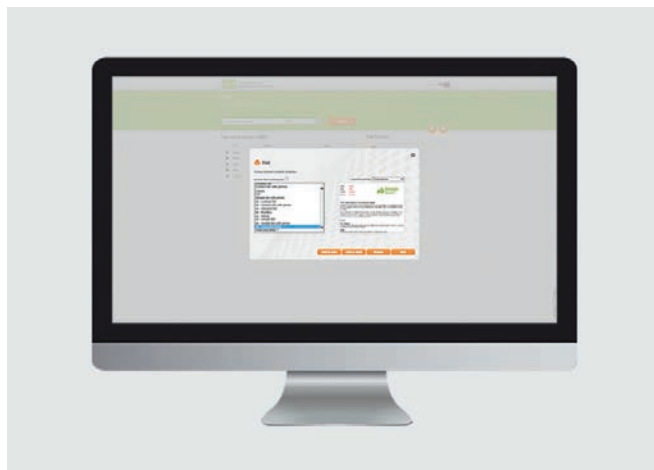


The Links module makes it easy for users to access the school's most frequently used IT-systems and services, e.g. learning management systems, dictionaries, knowledge databases, the school's social media etc.

This way users save time every time they access one of the frequently used services. Time, which can be spent on teaching and learning.

Please note: Links can be used in UMS Web and UMS School App.

## MERGE LETTERS

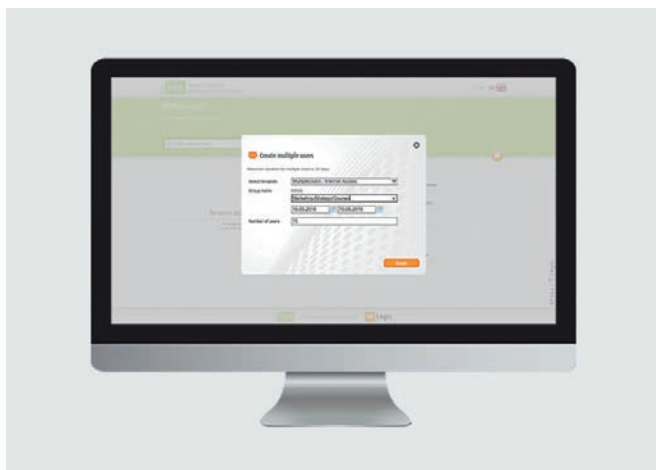


Merge Lists is an effective tool, which makes it easy to print standard documents for a variety of different purposes, e.g. class lists for attendance registration and welcome letters.

By using the module, you save time and avoid having to insert data in standard documents manually. You also make sure the data is inserted in the right place and that the documents thereby reach the intended receiver.

The module merges data variables you choose from UMS with the text you want. For example, it is easy to insert the students' names and addresses into welcome letters.

## MULTIPLE USERS

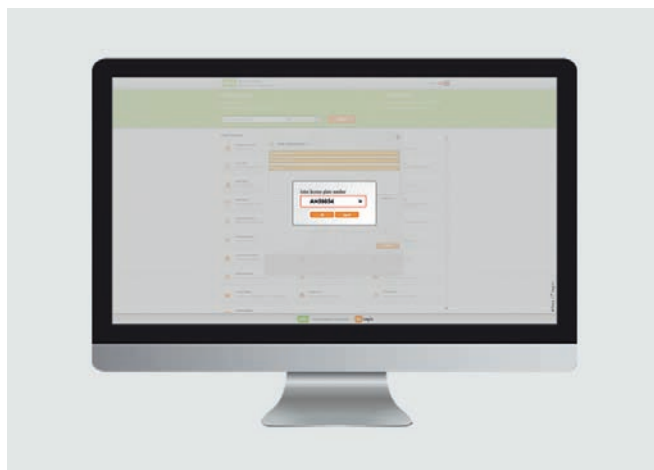


With the Multiple Users module, the school can welcome and manage groups of temporary users more efficiently. The module is particularly helpful, when you have courses participants and groups of guests, who need temporary access to the school's system. UMS creates and manages guest users quickly and easily.

Everyone with the appropriate rights can create temporary users, without assistance from the IT department. All new users get their own login.

The module also lets you edit the user's information, print or save the as CSV file and more.

## PARKING



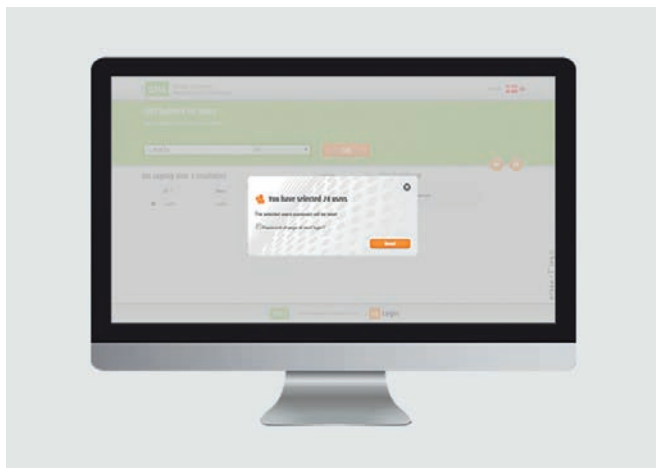
The Parking module makes it easy to avoid parking tickets at schools, which administer their parking spaces with the parking company Parkzone.

Through the module, students and employees can get a valid, digital parking permit simply by entering their vehicle's registration number in UMS Web or in UMS School App (addon). When the registration number is registered, it becomes visible to Parkzone, who then knows that the user is allowed to park at the school.

The module can be used in UMS Web and UMS School App.



## PASSWORD CHANGE

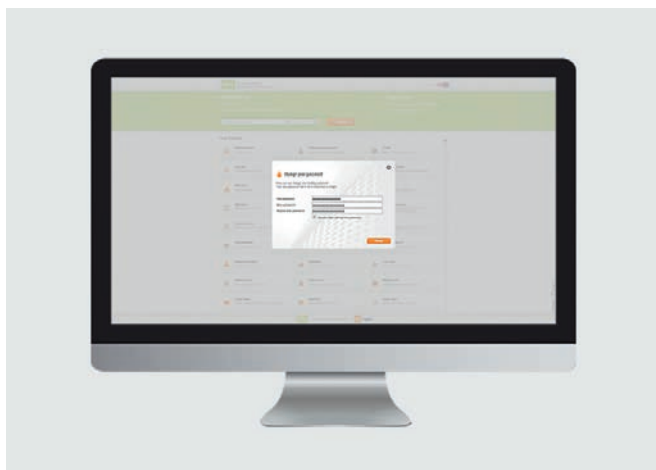


With Password Change, users with the appropriate rights – e.g. teachers or administrative staff – can change password for other users with just a few clicks.

It is possible to change passwords for individual entire classes or groups, without involving the IT department.

Password Change is particularly helpful if more users need to change their password at the same time, e.g. entire classes, as this is the least time-consuming option. It is, however, also possible to change password for one individual user at a time.

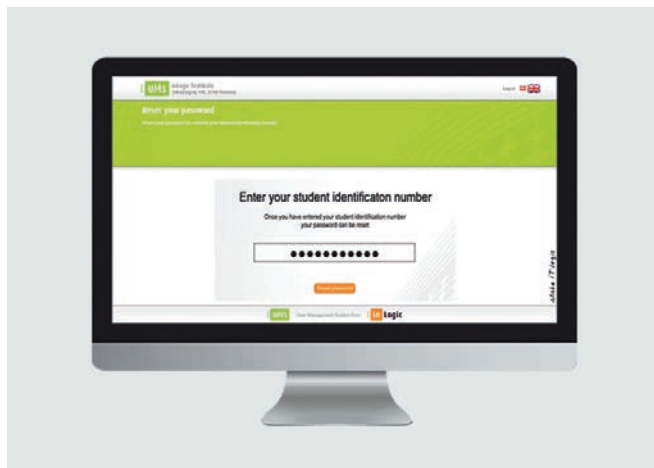
## PASSWORD SELF-SERVICE



With Password Self-service, users can change their own password, without involving the IT-department. The password is changed through UMS in a browser, regardless if the user is logged in or not. Because the users can change their own passwords, it only takes a few moments before they can get back to studying. It saves time for the students as well as the IT-department, which can focus on other tasks.

The module ensures that the user's password meets the school's own password guidelines, as well as the guidelines of the school's other IT-systems, e.g. Google Apps and Office 365.

## PASSWORD KIOSK

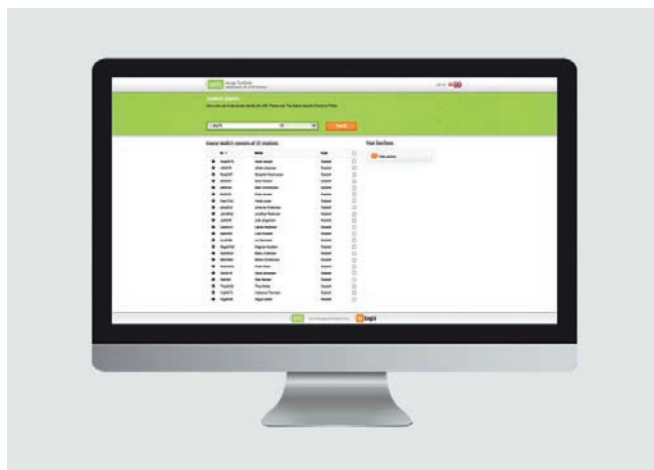


Password Kiosk is developed to help users, who forgot their password to the school's IT system. Through the module, users can reset their own password, without needing assistance from the IT department.

The kiosk enables users to reset their password and generate a new one via an interactive info screen or a computer at school, simply by entering their student identification number.

This saves the school resources every single time users forget their passwords, as the IT department does not have to get involved.

## PHOTOBOX



Photobox makes it easy and cheap to take photos of all your school's students.

With Photobox, taking photos of the students takes very little time. Because the photos are taken by staff members, you can make sure they meet your requirements, when they are taken.

This saves you time from checking, approving, and rejecting photos manually. Additionally, you avoid wasting time waiting for a student to retake their photo, if the first photo was rejected.

## UMS WEB



UMS Web is a user-friendly frontend interface, which makes it possible to use other frontend modules in UMS.

UMS Web automatically displays the modules available to the individual user in a simple and easily accessible directory. Which modules are shown depends on which modules the school has bought as well as on the user settings.

UMS Web is primarily for users such as students, teachers and administrative staff, who use UMS for various purposes, which do not require access to the underlying settings.

## USER INFO



User Info lets users update their own contact information, e.g. if they change their phone number or e-mail address. Similarly, the module lets students choose if they want to receive e-mails from the school on their private e-mail address or their school e-mail.

Via User Info, users can also upload a photo of themselves to the school's system. This is a faster, easier, and cheaper way to get pictures of all students, compared to having administrative staff take the pictures. Once uploaded, the school's administrative staff will have to approve the picture, in order to ensure that it meets the school's guidelines.

The module can be used in UMS Web and UMS School App.

## USER LOCK



With User Lock, the school's staff can deactivate a user's account and thereby block the user's access to the school's IT system, without needing assistance from the IT department.

It only takes a moment to deactivate an account, making it possible to intervene immediately, e.g. if a student is caught cheating. In the same way, reactivating the account also just takes a moment.

When you deactivate an account, you can write why. This way it is easy to see if, e.g. a student violates the same rules repeatedly.

## MORE VALUE WITH UMS SCHOOL APP

Several of our self-service modules give access to more functionalities in UMS School App.

Read about UMS School App and the features that are available on page 34. You can also learn more about how UMS School App can improve student communication, as well as give students and teachers an easier school day.

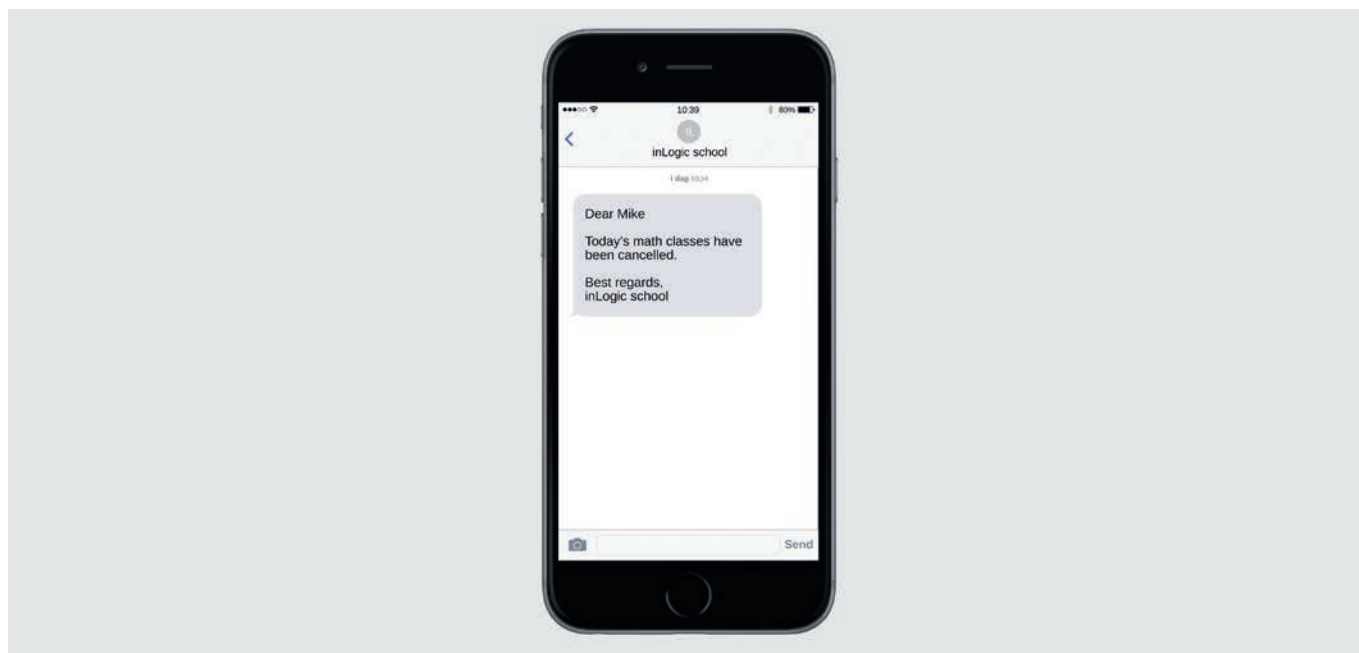




SMS

# SMS SEND

Gives you access to all other SMS modules



SMS Send is one of the pillars of our UMS solutions and it enables the use of a range of other SMS modules in UMS.

SMS is an effective ways to reach your students, because students almost always have their phones within reach and therefore messages are read very quickly.

This makes it a good alternative to e-mails, which are often left unread.

## TARGETED COMMUNICATION

With the Send SMS module, the school can send text messages to students e.g. in case classes are cancelled or moved to a new classroom.

By using SMS, the school will reach the students through their preferred platform, ensuring that the message is read and that the student is always up-to-date.

This makes the students happier and more independent. If a student's phone number is not registered in your system, the message will be sent as an e-mail instead.

You can design different templates for messages, which the teachers can easily modify and send out when needed. Alternatively, teachers can write their own text and send it to the relevant students or classes.

You decide whether or not the students can answer by SMS. If a student replies to an SMS sent by a teacher, the message is received as an e-mail.

The module includes 1 pcs. 1-port IP-based SMS modem with which it is possible to subscribe to a flatrate SMS subscription. This way you can send messages to the students as often as needed at a fixed, low rate.

## OPTIONS AVAILABLE WHEN YOU HAVE BOUGHT SMS SEND

When you have bought SMS Send, you can purchase a range of other modules, which give you access to more functions.

Below these add-on modules are described briefly. If you would like more information about the modules, they are described separately on the following pages.

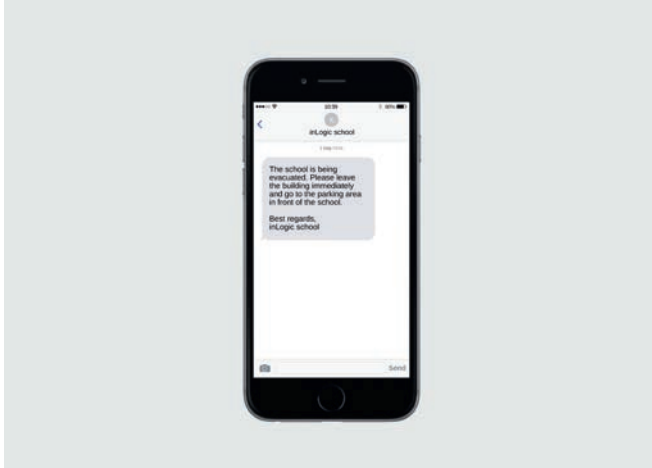
- **SMS Alert:** Makes it quick and easy for the school to notify students and staff if the school is being evacuated because of an emergency
- **SMS Password and Password Kiosk:** Makes it possible for the students to reset their own password, when and where they need it
- **SMS Subscription:** Makes it possible for students to subscribe a daily timetable, timetable changes, new grades and news from the school
- **SMS Timetable:** Makes it possible for students to receive today's timetable via SMS. All they need to do is to send the word 'timetable' to the school via SMS
- **SMS Webservice:** Allows third-party services to send out SMS messages via the inLogic SMS Gateway
- **SMS Welcome:** Makes it possible for the school to send out automatic welcome messages to new students, as soon as they are registered in the school's system



# SMS SEND MODULES

Get more out of SMS Send

## SMS ALERT



SMS Alert provides fast and effective warnings in case of fire, bomb threats, school shootings and other emergency situations.

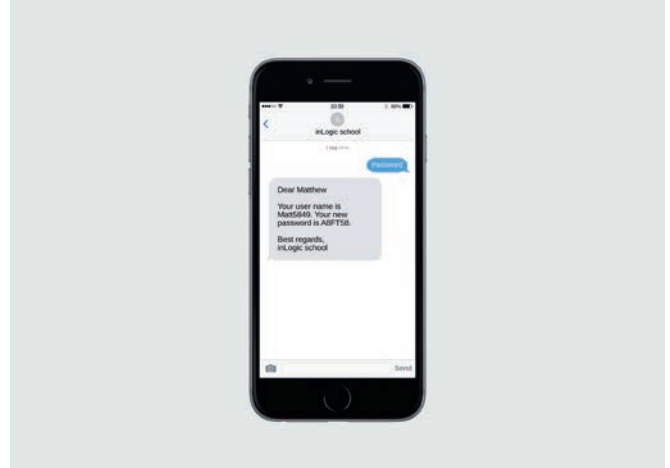
When a crisis arise, everyone needs to be informed of it. And it needs to be done in a simple and transparent way.

The SMS Alert module is separate from our other SMS modules, to avoid confusion with other SMS templates. When you open the module, your entire screen becomes red in order to let you know that all students and staff will receive your message.

### BENEFITS OF SMS ALERT

- Supports direct message to the appropriate authorities
- Immediately notifies everyone via their mobile phones
- Creates a sense of security for everyone at the school and their relatives
- Gives you an easy editor with predefined texts, which are almost ready to be sent out
- Lets you defines who has access to SMS Alert
- Turns your entire screen red, when you open the open the module to issue an alarm

## SMS PASSWORD



SMS Password makes it possible for the school's users to reset their own passwords, simply by sending an SMS text.

The service is available around the clock, even during weekends and holidays.

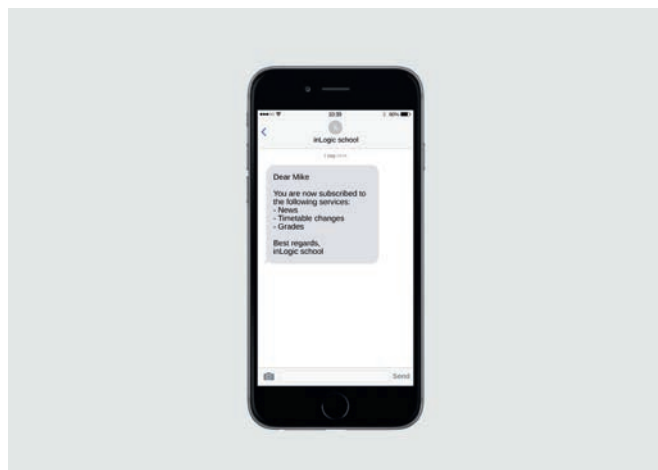
### HOW TO USE SMS PASSWORD

- Send an SMS to the school's SMS gateway with the word 'Password'
- Wait a few seconds and you will receive an SMS with your new password

### BENEFITS OF SMS PASSWORD

- You help your students and enable them to get back to their studies quickly. As a result, your student's satisfaction with the school's digital services will increase significantly
- You save resources, as the IT department does not have to get involved every time a student forgets his or her password
- SMS Password is always available, regardless of time and place
- The IT department can configure, how the password it reset, e.g. with a serial number or at random

## SMS SUBSCRIPTION



With SMS Subscription, you can send relevant news to your students automatically. Messages sent by SMS have a better chance of being read than e-mail. Because of this, it makes good sense to use SMS for your student communication, so your students are always up-to-date.

### GET AUTOMATIC NOTIFICATIONS

Via SMS Subscription, the students can subscribe to automatic notifications via SMS, when there is relevant information for them.

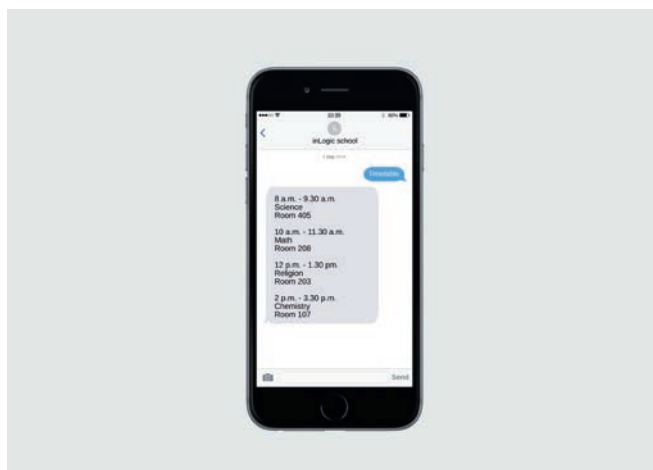
Depending on which modules your school has bought, students can choose to get automatic SMS messages about timetable changes, grades and school-related news.

Students can also choose to receive their timetable for the day, every day of the school week, for instance 2 hours before the first lesson starts.

### BENEFITS OF SMS SUBSCRIPTION

- Make sure students do not miss class, because they do not have an updated timetable
- Reduces the number of administrative tasks to be done, as the users are up-to-date and well-informed
- Makes it easy for students to be well-prepared
- Students receive their grades, as soon as they are released
- Students choose for themselves what information they want to receive, making your communication more effective
- Students can update their own phone numbers, making sure the school always has the right contact information

## SMS TIMETABLE



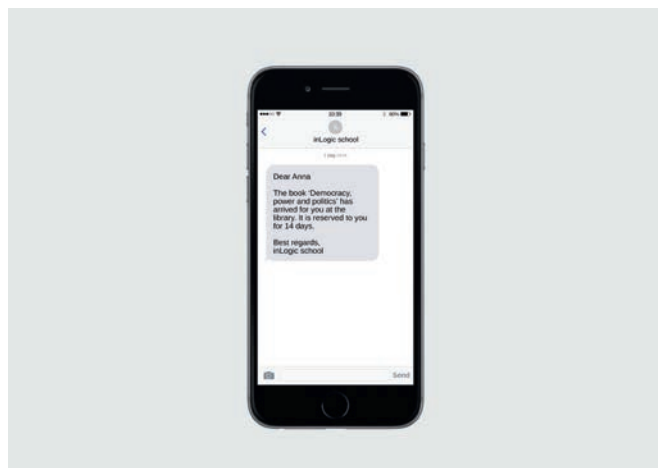
With SMS Timetable, students can easily stay up-to-date with their timetable and any changes made.

By sending an SMS with the word "timetable" to the school's SMS gateway, your students receive an automatic SMS with the timetable of the day. This way you avoid that students show up for classes, which have been cancelled, and you ensure that they are notified, if classes are moved to another location.

### BENEFITS OF SMS TIMETABLE

- The students become more independent and can easily stay up-to-date
- Students save time having to look up the timetable online
- Students avoid showing up to cancelled classes or empty classrooms, if a class is moved to another location.
- Students become more engaged and their motivation is maintained
- The module automatically extracts all the updated timetable data; It does not require any assistance from the IT-department or administrative staff

## SMS WEB SERVICE



SMS Web Service allows third-party services – or services you have developed yourself – to send out SMS messages via the inLogic SMS Gateway.

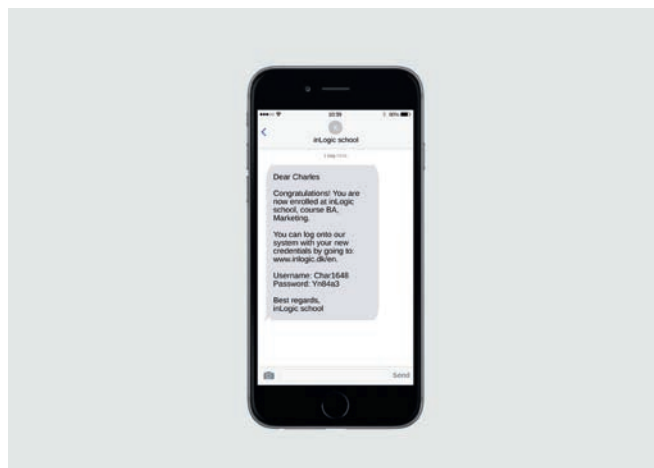
This way e.g. your library system or your cafeterias payment system can send out messages to the school's users.

All messages are sent from the same number that is used to send out timetable info, news, grades etc.

### BENEFITS OF SMS WEB SERVICE

- As the service uses UMS' SMS gateway, there is no price pr. SMS. This prevents you from receiving unexpected bills
- Messages from external services are sent from the school's phone number, which the students already have. This makes your communication more coherent and streamlined
- SMS Web Service is an integrated part of UMS. This means that there is nothing extra to maintain, that it is easy to troubleshoot and that there is a log

## SMS WELCOME



With SMS Welcome, new students automatically receive a welcome SMS, as soon as they are enrolled and set up as users in the school's system.

The school decides what the welcome SMS contains, e.g. a welcome message, login information to the school's IT-system and a link to the school's website.

### BENEFITS OF SMS WELCOME

- The school's welcome message is sent to the students' preferred communication platform, making sure it is received and read very quickly
- The module introduces new students to the most important information, making sure students adopt the school's technology from the start
- Administration is greatly simplified when users are well-informed from the start
- The welcome message sends a signal that the school has a distinct IT profile and superior student service
- You can create several SMS Welcome messages and tailor them to different study programmes

“

*All your users will **thank you for the simple interface** they are met with. I still have not met anyone who did not like UMS. For us, UMS Welcome, UMS School App, and SMS Send have been very helpful with **informing both when students start and throughout the school term.***

Niels H. Overgaard  
IT- Manager  
IBA Erhvervsakademi Kolding





## ATTENDANCE REGISTRATION



# ATTENDANCE REGISTRATION

Easily register and monitor attendance



Attendance Registration is a tool for the educational sector, which makes it easy to register attendance. Through a simple and intuitive interface, the teacher can register who is present, who is late and who is absent, all in a matter of seconds and simply by clicking the button with the student's name and picture.

The interface uses colour codes, which makes it easy to see how the individual students are registered. You decide which attendance options you want to use - e.g. options for being late, for legal and illegal absence - as well as which colours to use for the different options.

When attendance is registered, UMS automatically writes back to the administrative system (if supported).

If the school has received SMS messages from the student or if the staff has written notes regarding the student's attendance, these can be seen in the interface.

## SAVE TIME EVERY TIME YOU REGISTER ATTENDANCE

Attendance can be registered in UMS Web (in your browser) or in UMS School App, if your school has purchased this.

The quickest way to do it is to use the app, as it only takes a few seconds to get the phone out, open the app and register attendance.

It is faster than making the registration on paper and entering it into the system manually. It is even faster than using a computer that has to be turned on before you can use it.

It is simple and easy and it pays off to be conscious of time resources. If each of the school's teachers can save minutes every time they register attendance, it quickly adds up to many hours in a school year.

## GET MORE OUT OF YOUR ATTENDANCE REGISTRATION

There are two add-on modules available, if you want even more benefit from your Attendance Registration module:

- Attendance Registration Advanced will give you the opportunity to send out SMS messages, which invites the students back into the classroom, after they have been registered as absent. This module gives you access to a statistical interface, which makes it easy to monitor the students' attendance, as well to our Guardian Portal, which has been developed for parents, guardians, employers etc., who need to keep up to-date with a student's progress in school.
- Attendance Registration Card System is an integration to a card system, which allow students to register their own attendance by swiping a card when they arrive at the school, as well as when they leave again.
- By integrating Attendance Registration Basic with a card system, all registrations become available in UMS. This allows the teacher to see if everyone has registered correctly and to make corrections if necessary.

For more information on Attendance Registration Advanced and Attendance Registration Card System, please read the following pages. If you would like more information on Attendance Registration for UMS School App, please go to page 34-35.

# ATTENDANCE REGISTRATION MODULES

Attendance statistics. Guardian Portal, and attendance registration card system

## ATTENDANCE REGISTRATION ADVANCED

Attendance Registration Advanced is an add-on module for schools that want extra functionalities in the web interface for Attendance Registration. Among other things, the add-on module gives you access to an advanced statistical interface, which makes it even easier to keep track of attendance.



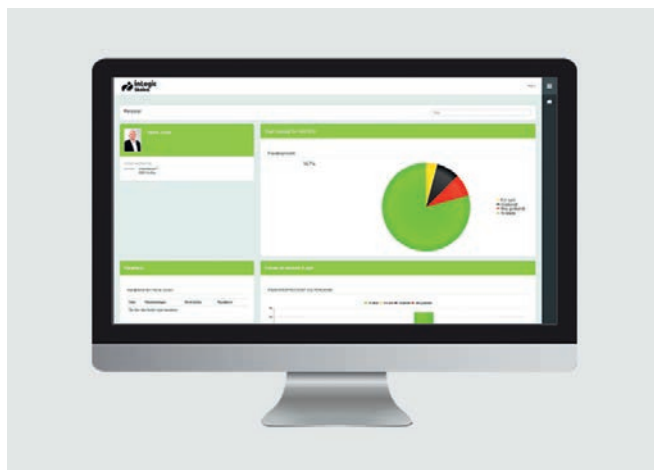
### ATTENDANCE REGISTRATION ADVANCED

This module offers you an advanced statistical interface, which makes it easier to monitor attendance, in addition to several other functions.

Students can see their own attendance, while teachers, student counsellors, and management can see attendance for relevant students and classes.

With Attendance Registration Advanced you get:

- The data presented to you, when you log into UMS, depends on whether you are a student, a teacher, a manager or a student guidance councillors. This way you will only see relevant information
- The portal allows you to monitor several students at the same time, e.g. if you have more than one child attending the school. For more information about the Guardian Portal, please read the following page
- Attendance reports, which can be printed by the school's staff in a few clicks. It is possible to make reports for one or more students through the web interface, e.g. based on who teaches a certain class or who is the primary contact for a certain group of students
- Last but not least, it is possible to print attendance registration sheets, which the teacher can use on e.g. field trips or during classes where it is not possible to register attendance on a computer



### GUARDIAN

The Guardian Portal is developed to allow parents, guardians, employers, social workers etc. to follow a student - and his or her timetable, attendance and grades – throughout the school term or course.

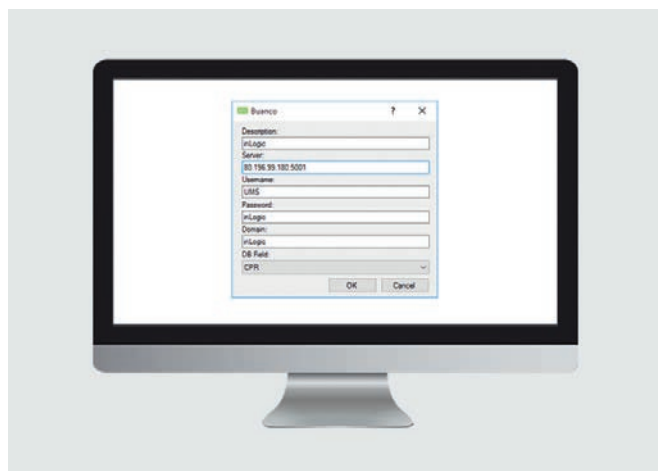
The portal gives an easy overview of the student's status and saves you time and worries. It is possible to have several students connected to your user profile and you will automatically be notified when there is something new for you to see.

If one of your students are registered as being absent, you will automatically be notified via SMS. The SMS is sent within five minutes of the registration being made.

### BENEFITS OF THE GUARDIAN PORTAL

- Parents etc. are automatically notified, which means that the school can act without having to contact the parents first
- You can subscribe to daily SMS updates or weekly E-mail updates
- When you create a user profile: Enter your e-mail or phone number. You will then receive a pin code and your profile will be ready
- You can see the student's timetable, attendance, homework and grades
- Developed in responsive design - can be used on all devices

## ATTENDANCE REGISTRATION CARD SYSTEM



Attendance Registration Card System is a system developed for schools. The system allows students to register their own attendance with i.e. their Student ID card. The students can swipe their card to check in when they arrive at the school and check out when they leave again.

The card system makes it is easy to monitor the students' attendance, as all card registrations automatically will be available in UMS.

Through the user-friendly interface, the teacher can see if everyone have registered correctly and make corrections if necessary.

### INTEGRATIONS

We currently integrate with Buanco card system. If you prefer integration with another card system, please contact us for price and availability.

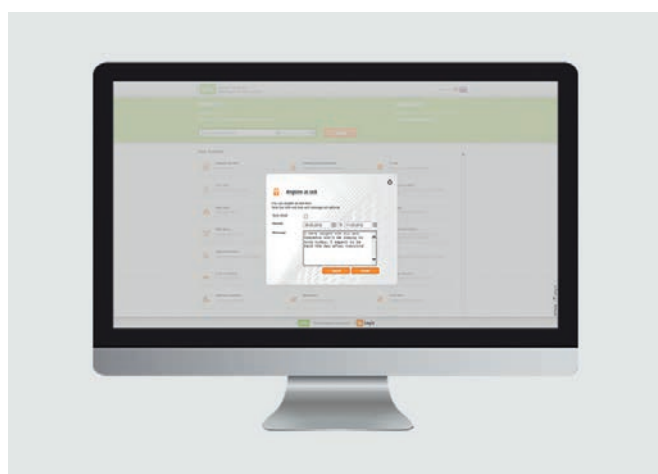
## ABSENCE REGISTRATION FOR EMPLOYEES

Register and monitor staff absence

The module Absence Registration for Employees automates the entire process around staff absence, reducing the number of tasks to be done every time an employee is ill. This saves resources and reduces the workload for the administrative staff.

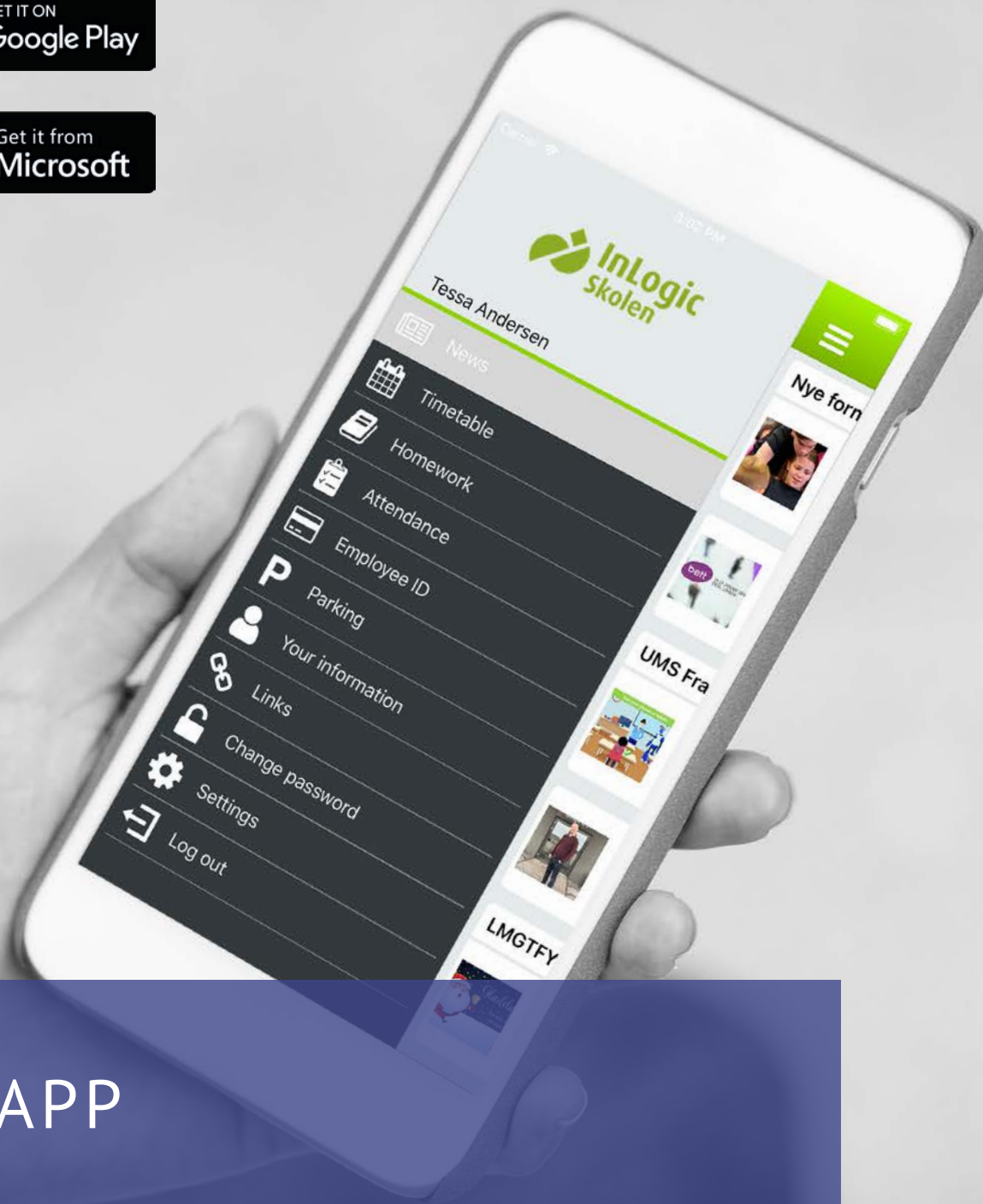
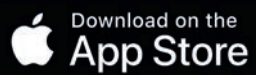
With Absence Registration for Employees, staff can notify the school of illness either by sending an SMS message or by using the web portal. As soon as the school is notified of the staff member's absence, UMS generates an e-mail, which is automatically notifies the appropriate people and departments.

All settings are managed through the user-friendly frontend interface, which means that the administration staff can manage far more, without involving the IT-department.



### BENEFITS OF USING ABSENCE REGISTRATION FOR EMPLOYEES

- If necessary, absence registrations can be made on behalf of others. For instance, if a staff member notifies the school of illness over the phone, the administrative staff can register it in UMS
- Notifications of illness can be sent in by SMS or online
- Relevant staff and departments are automatically notified
- The school saves resources as the workload for the administrative staff is reduced
- The administration interface contains statistics, which makes it easy to keep track of absence across all management levels.



APP



# UMS SCHOOL APP

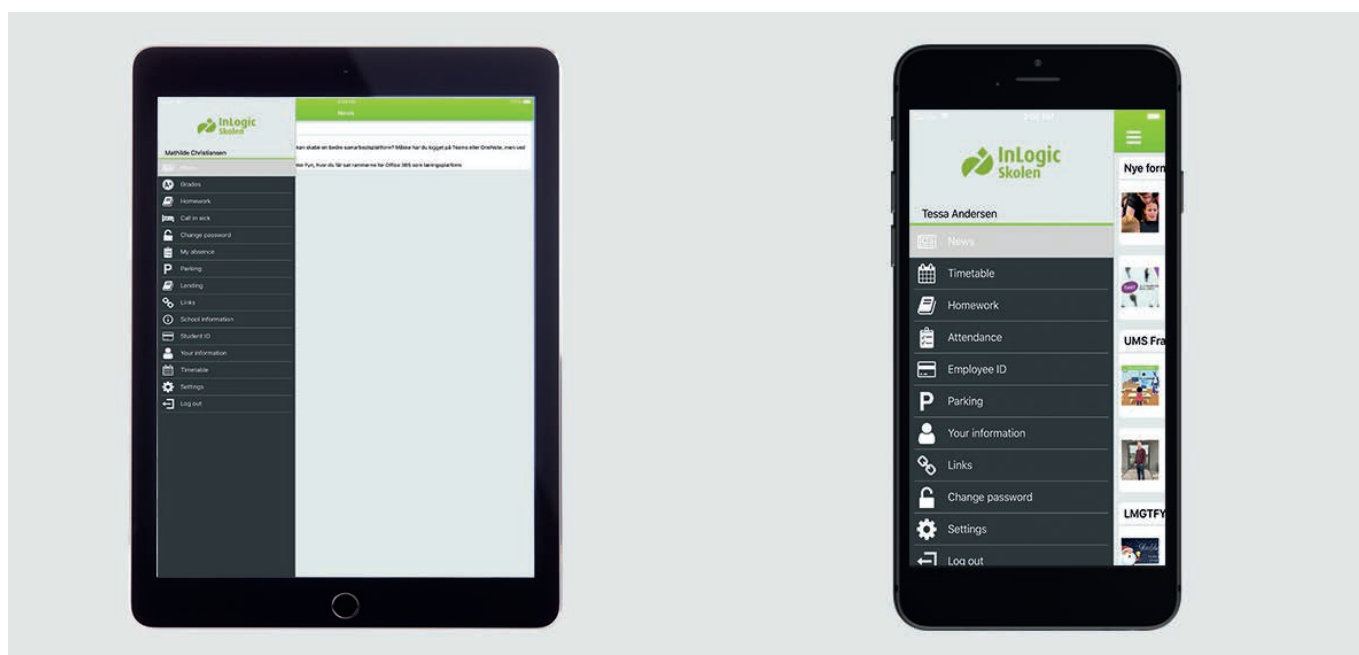
Modern student communication through smartphone

With a customised UMS School App, you will connect with the students on their preferred communications platform. The app makes it easy for students to stay connected and keep up-to-date with the school and its initiatives.

Our app is a standard app, which is customised to your needs – both in terms of contents and design. For instance, you can choose to use the school's colours and logo, so the app fits seamlessly into your branding.

The app is modular, so you can choose the functions you need and only pay for them. If you would like more information about the add-on modules, they are described separately on the following page.

UMS School App is available for iPhone, Android, and Windows Phone.



## WHAT YOU GET

### Grades

With the Grades function, students will automatically receive their latest grades, as soon as they are released.

### Homework\*

Gives students an easy overview of their homework via a list containing all of their homework from their various classes and through notes on their respective timetable blocks.

### My information\*

Makes it possible for users to update their own contact information and preferences. The add-on gives students the possibility to upload a picture of themselves to their profile.

### News

Via News, students can easily keep track of everything that happens at school, e.g. new events etc. The app can automatically get news from your website or your Facebook profile. Alternatively, we have a user-friendly interface that allows you to enter news manually.

### Parking

The Parking function makes it possible to get a digital parking permit to the school's parking lot, without having to go to the school's reception first.

### Push notifications

Users receive push notifications with a timetable for the day, changes to the timetable, news, grades, and emergency alerts.

### Student ID

With the app, the students get a digital student ID that is always within reach.

### School info

Soon you will be able to read about the different types of education offered at the school in the app.

### Timetable

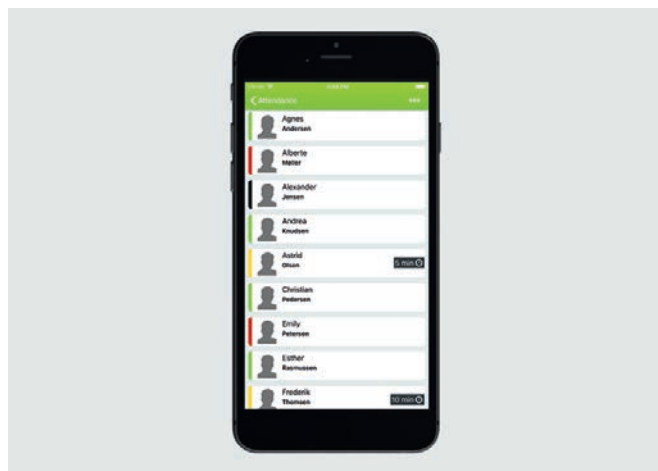
With the Timetable function, users always have an up-to-date timetable within reach. The calendar is intuitive and easy to read, making it easy to get an overview of your timetable. You can choose between seeing the timetable for a single day, a week, or a month.

\*The module is also available as add-on for extra functions.

# UMS SCHOOL APP MODULES

Add modules and get more functions

## APP



### ATTENDANCE REGISTRATION

Attendance registration for UMS Web and UMS School App gives an easy overview with a lot of different functions.

#### My attendance

- With My attendance, students can easily monitor their own attendance. They get a summary of their attendance records, which includes the total percentage of absence and a breakdown of absence per class. On days they have been registered as absent, they can add a reason
- Students can turn in sick, if they are sick or absent for other reasons. The student can also add a reason for being absent

#### Attendance registration

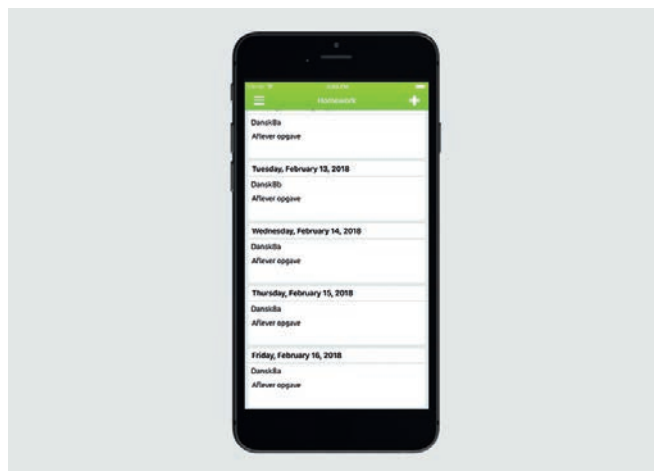
- Teachers can quickly register which students are present, late, or absent
- In the app, teachers can see if there is a note from the student or other teachers

### STUDENT ID

The Student ID function gives all the school's students and teachers an electronic student ID on their smartphone.

The Student ID has a validation button, which updates the student's ID information. This immediately confirms that the user is still a student at your school and removes the risk of fake IDs.

## APP & WEB



### MY INFORMATION/USER INFO

Students and teacher can easily update their contact information and picture. Read more on page 23.

### HOMEWORK

Teachers can assign homework in the app. The homework is automatically sent to other systems, e.g. Office 365 and G Suite. Read more on page 20.

### LINKS

Users get access to the IT-systems and services that are frequently used, e.g. LMS systems, dictionaries, the school's social media, etc. Read more on page 21.

### PARKING

Through the app, students and employees can get a valid, digital parking permit simply by entering their vehicle's registration number in the app or in UMS Web. Read more on page 21.

### PASSWORD CHANGE

Students and teachers can quickly change their password in the app. UMS ensures that the password comply with password rules and synchronise with all other IT-systems. E.g. UNI-C, G-Suite, Office 365, LMS systems, etc. Read more on page 22.

A black and white photograph of a man with short dark hair, wearing a light-colored collared shirt under a grey sweater. He is sitting at a desk, looking down at a laptop keyboard with a slight smile. His hands are on the keyboard. The background is blurred, showing office shelves and equipment. A semi-transparent purple banner is overlaid on the lower part of the image.

## INTEGRATIONS

## PAPERCUT

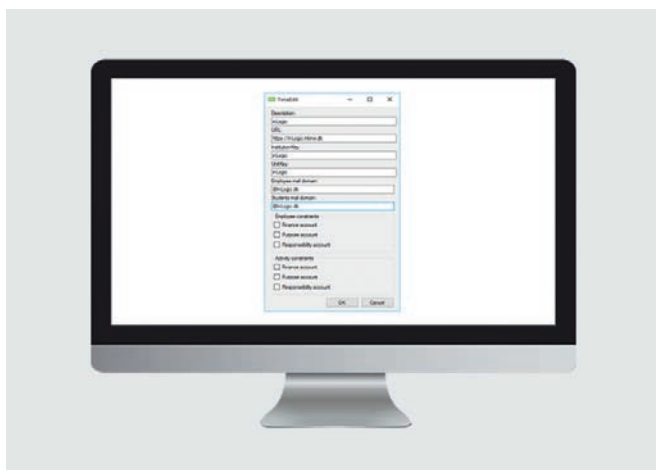


Our PaperCut integration automatically creates users in the PaperCut system, based on data from the administrative system. It can even assign printer cards automatically in UMS. This saves you both time and resources.

Teachers and administrative staff can look up users in the system and find their contact information, which makes it easy to intervene, e.g. if they suspect excessive use.

With the 'Find Owner'-function, it is possible to reunite users with lost printer cards.

## TIMEEDIT

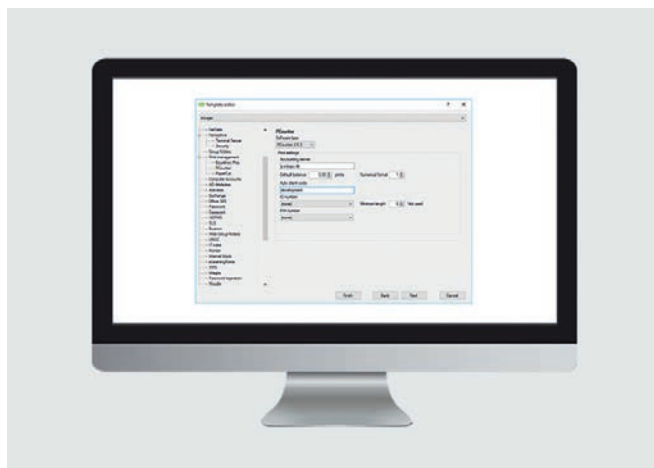


Our integration with the scheduling- and resource planning system TimeEdit automatically uploads user data to TimeEdit for staff and students, as well as data for activities.

This saves you time and makes life easier for the administrative staff, which only has to maintain data in one place.

Data for activities is accessible up to 180 days prior to their start date, which means that timetables can be made well in advance of the new school year or term. In order to ensure all the data in TimeEdit is up-to-date, all timetable blocks are updated three times every day.

## PRINT PAYMENT AND MANAGEMENT



The Print Payment and Management module is developed for schools, which want to avoid handling all of its users' print accounts manually.

The module automatically creates and handles print accounts and integrates them with printer management systems such as PAS (Printer Accounting System), Equitrac and PCounter.

## UMS WEB SERVICE



The UMS Web Service module allows external suppliers to access the UMS database as a web service.

This way, selected data can be used securely through UMS Web Service.



# CALCULATE YOUR PRICE

## ONLY PAY FOR WHAT YOU NEED

UMS is a solution that is custom-made for your needs. Instead of choosing a pre-packaged deal containing things you do not need, you are free to choose the modules you want – no more, no less.

This way you get a solution that is both cheaper and simpler. As a bonus, you can easily expand UMS with more modules later on. When calculating the price there are a few elements you need to consider.

### ANNUAL LICENSE

UMS is paid for through an annual license fee, which covers phone support for up to three people within normal office hours, as well as bug fixes and updates for UMS and the modules (some modules are exempt from this. Please read more under Annual Maintenance below).

The license fee depends on the number of students at your school. The price pr. student is shown in the table to the right. UMS can also handle all of your employees at no extra cost.

## NO. OF STUDENTS (FULL ACADEMIC YEAR)      PRICE PER STUDENT

0 - 500	5.2 USD
501 – 1,000	4.8 USD
1,001 – 1,500	4.5 USD
1,501 – 2,000	4.0 USD
2,001 – 2,500	3.7 USD
2,501 – 3,000	3.4 USD
3,001 – 3,500	3.3 USD
3,501 – 4,000	2.9 USD
4,001 – 4,500	2.8 USD
4,501 – 5,000	2.6 USD
5,001 – 5,500	2.5 USD
5,501 – 6,000	2.3 USD
6,001 – 9,999	2.2 USD
10,000 – 49,999	2.0 USD
Over 50,000	Please contact us



### MODULE PRICES

Each module has a fixed price. You can see the price for each separate module in the table on the next pages. The table also shows the estimated time for installation, as well as an annual maintenance fee for the modules that require that.



### INSTALLATION

In addition to the price of UMS and the modules, you pay for installation. Installation is invoiced at an hourly rate of 180 USD. You can find the estimated time for installation of the individual modules in the table with module prices.



### ANNUAL MAINTENANCE

Some modules are exempt from the regular maintenance, as they are more comprehensive and therefore more time-consuming to maintain. When you buy these modules, you pay a separate maintenance fee.

The table on the next pages indicates which modules that require an annual maintenance fee.



### AZURE HOSTING

If you do not wish to operate your UMS servers on premise, please contact us to get an offer for an operations management solution at a hosting centre or with Azure hosting.

## PRICE EXAMPLE

Below is an example of a college with 1,100 students. The school require a system to manage all their users, in order for the IT-department to save time and avoid performing multiple dull tasks. The teachers should be able to get started both faster and easier with their tasks and teaching. And the students should be able to access the systems effortlessly, as well as have information easily available. The college utilises Office 365 and OneNote Class Notebook.

We have gathered the UMS modules that collectively fulfil the college needs in the example below.

## EXPENCES AT PURCHASE

UMS annual license: 1,100 students at 4.5 USD per student*	16 hours	4,950	USD
AD Attributtes	1 hour	1,550	USD
Office 365 Sync	1 hour	3,850	USD
Office 365 Timetable blocks	1 hour	2,300	USD
UMS Web	2 hours	1,550	USD
Password Change	3 hours	770	USD
OneNote Class Notebook integration	4 hours	1,550	USD
In total for license and modules	28 hours	16,520	USD
Price for installation	28 hours at 180 USD	5,040	USD
In all		21,560	USD

\* The price of UMS includes a workshop after the installation is complete. The workshop teaches you how to use UMS and the modules, so you get the most out of your new solution.

## ANNUAL EXPENCES

The annual expences for UMS consist of the annual UMS license based on the number of students attending the school in addition to a an annual maintenance fee for selected modules. The annual expences in this example are:

UMS annual license	4,950	USD
Annual maintenance fee for OneNote Class Notebook integration	1,550	USD
In all pr. year	6,500	USD

## HOSTING IN MICROSOFT AZURE

We offer to host and operate UMS in Microsoft Azure. We can manage the operations for you but you are also welcome to do so yourself. If you need assistance moving your existing servers, we are ready to help you whether it is UMS servers or other servers.

If you are interested in learning more about how you can avoid to manage hosting and operations yourself, please call +45 4240 8800 or send an e-mail to [sales@inlogic.dk](mailto:sales@inlogic.dk).



# UMS PRICE LIST

## ANNUAL MAINTENANCE COST BY NUMBER OF STUDENTS

MODULE NAME	PRICE IN USD		INSTALLATION TIME		0-2,000	2,001-4,999	5,000-9,999
APP							
UMS School App	6,900	USD	-		3,100 USD	3,100 USD	3,100 USD
Attendance Registration for app	1,150	USD	-		770 USD	770 USD	770 USD
Student ID for app	770	USD	1	hour	-	-	-
APP AND WEB							
Homework	1,550	USD	-		-	-	-
My information / User info	1,150	USD	2	hours	-	-	
Links	1,150	USD	1	hour	-	-	-
Parking	1,150	USD	1	hour	-	-	-
Password self-service	770	USD	2	hour	-	-	-
ATTENDANCE							
Attendance Registration	5,400	USD	16	hours	3,100 USD	3,850 USD	4,600 USD
Attendance Registration Advanced	3,850	USD	6	hours	1,550 USD	2,300 USD	3,100 USD
Attendance Registration Card System	3,850	USD	12	hours	1,550 USD	2,300 USD	3,100 USD
Absence registration for employees	3,100	USD	8	hours	3,100 USD	3,100 USD	3,100 USD
BACKEND							
AD Attributes	1,550	USD	1	hour	-	-	-
Exchange Reviewer	770	USD	1	hour	-	-	-
Exchange Timetable Blocks	3,100	USD	8	hours	-	-	-
File Server Transfer	1,150	USD	2	hours	-	-	-
Password Expiration Alert	770	USD	2	hours	-	-	-
Power Save	770	USD	2	hours	-	-	-
SLI	1,150	USD	2	hours	-	-	-
G SUITE							
G Suite Sync	3,850	USD	4	hours	-	-	-
G Suite Timetable Blocks	2,300	USD	1	hour	-	-	-
Google Classroom& Sites Integration	3,100	USD	8	hours	3,100 USD	3,850 USD	4,600 USD
Google Drive Integration	3,100	USD	8	hours	3,100 USD	3,850 USD	4,600 USD
INTEGRATIONS							
PaperCut	1,550	USD	1	hour	-	-	-
Print Payment and Management	770	USD	1	hour	-	-	-
TimeEdit	4,600	USD	8	hours	3,100 USD	3,850 USD	4,600 USD
UMS Web Service	1,550	USD	2	hours	-	-	-
LMS							
Canvas Integration	4,600	USD	8	hours	3,100 USD	3,850 USD	4,600 USD
ElearningForce SharePoint LMS Integration	4,600	USD	16	hours	3,100 USD	3,850 USD	4,600 USD
Fronter Integration	4,600	USD	16	hours	3,100 USD	3,850 USD	4,600 USD
itslearning	4,600	USD	8	hours	3,100 USD	3,850 USD	4,600 USD
Moodle integration	3,100	USD	4	hours	3,100 USD	3,850 USD	4,600 USD
Wizdom Integration	3,100	USD	4	hours	3,100 USD	3,850 USD	4,600 USD

## ANNUAL MAINTENANCE COST BY NUMBER OF STUDENTS

Module Name	Price in AUD		Installation Time		0-2,000	2,001-4,999	5,000-9,999
Office 365							
Office 365 Sync	3,850	USD	1	hour	-	-	-
Office 365 SharePoint integration	3,100	USD	4	hours	3,100 USD	3,850 USD	6,000 USD
Office 365 Teams	3,850	USD	16	hours	3,100 USD	3,850 USD	6,000 USD
Office 365 Timetable Blocks	2,300	USD	1	hour	-	-	-
Office 365 UMS SharePoint Portal	3,850	USD	16	hours	-	-	-
OneNote Class Notebook integration	1,550	USD	4	hours	1,550 USD	1,550 USD	1,550 USD

## SELF-SERVICE

Advanced CSV Export	770	USD	1	hour	-	-	-
Exam Handling	3,100	USD	16	hours	-	-	-
Grades (web and app)	1,150	USD	1	hour	-	-	-
Group Creation	2,300	USD	8	hours	-	-	-
Group Folder	770	USD	2	hours	-	-	-
Guest Users	1,550	USD	2	hours	-	-	-
Homework (web and app)	1,550	USD	1	hour	-	-	-
Internet Block	1,550	USD	2	hours	-	-	-
IT Rules	2,300	USD	2	hours	-	-	-
Links (web and app)	1,150	USD	1	hour	-	-	-
Merge Letters	1,550	USD	3	hours	-	-	-
Multiple Users	1,150	USD	2	hours	-	-	-
Parking (web and app)	770	USD	1	hour	-	-	-
Password Change	770	USD	3	hours	-	-	-
Password Kiosk	1,150	USD	2	hours	-	-	-
Password Self-service	770	USD	2	hours	-	-	-
Photobox	1,150	USD	1	hour	-	-	-
SSO	1,550	USD	24	hours	-	-	-
UMS Web	1,550	USD	2	hours	-	-	-
UMS Welcome	1,550	USD	2	hours	-	-	-
User Info	1,150	USD	2	hours	-	-	-
User Lock	770	USD	1	hour	-	-	-
Web Timetable	2,300	USD	2	hours	-	-	-

## SMS

SMS Alert	1,150	USD	1	hour	-	-	-
SMS Password	1,550	USD	1	hour	-	-	-
SMS Send	2,300	USD	2	hours	-	-	-
SMS Subscription	1,550	USD	2	hours	-	-	-
SMS Timetable	1,550	USD	2	hours	-	-	-
SMS Web Service	1,500	USD	4	hours	-	-	-
SMS Welcome	770	USD	1	hour	-	-	-

## PLEASE NOTE

Unless otherwise indicated, all prices are one-off prices. All prices listed without sales tax. The brochure and pricelist is subject to change without notice.



# MODULE DEPENDENCIES

Some modules are dependent on other modules. The dependencies are shown below.

MODULE	DEPENDENCY
Advanced CSV Export	UMS Web
User Info	UMS Web
User Lock	UMS Web
ElearningForce LMS	UMS Web
Merge Letters	UMS Web
Attendance Registration	UMS Web, SLI
Attendance Registration Advanced	UMS Web, SLI, Attendance Registration and Merge Letters
Attendance Registration Card System	UMS Web, SLI and Attendance Registration
G Suite Timetable Blocks	G Suite
Google Classroom and Sites integration	G Suite
Google Drive integration	G Suite
Group Creation	UMS Web
Guest Users	UMS Web
Internet Block	UMS Web
IT Rules	UMS Web
Grades	UMS Web
Multiple Users	UMS Web
Moodle	UMS Web
Office 365 SharePoint integration	Office 365 Sync
Office 365 Timetable Blocks	Office 365 Sync
Office 365 UMS SharePoint Portal	Office 365 SharePoint
OneNote Class Notebook	Office 365 Sync
PaperCut	UMS Web
Password Kiosk	UMS Web, Password Change and SMS Send (add-on)
Password Self-service	UMS Web
Password Change	UMS Web
Power Save	UMS Web
Web Timetable	UMS Web
SMS Subscription	SMS Send, UMS Web
SMS Alert	SMS Send, UMS Web
SMS Password	SMS Send
SMS Send	UMS Web
SMS Timetable	SMS Send
SMS Welcome	SMS Send

## PLEASE NOTE

This list is subject to change without notice. To see the most recent module dependencies, please visit [www.inlogic.dk/en](http://www.inlogic.dk/en) and look at the relevant product pages.

## US RESELLERS

Our US Partner is Embrace-IT with US HQ in Miami. Visit [www.embrace-it.com](http://www.embrace-it.com) or contact Niels Sodberg on +1.305.505.5528 or at [Niels.Sodberg@embrace-it.com](mailto:Niels.Sodberg@embrace-it.com)

# SAINT IGNATIUS' COLLEGE RIVERVIEW

## Case



Saint Ignatius' College Riverview in Sydney, Australia, were on the hunt for a system that could manage all their parent and student accounts. The school needed daily maintenance and management of as many as 2,900 parents and 1,600 students. With such a high amount of accounts to handle, the day to day management was becoming unruly.

Brett Houghton, Head of Innovation & Technology, points out that other similar products figuratively do the same job but the flexibility of UMS and how well it integrates into their Student Management System, is why they have chosen UMS.

*"I definitely would recommend UMS to other schools. It has been a very valuable product that we have introduced into our suite at Riverview."*

**Brett Houghton**, Head of Innovation & Technology,  
Saint Ignatius' College Riverview

With UMS' flexibility, they can easily make changes across the environment, which results in great time savings and easy day-to-day management.

After the introduction of UMS, Saint Ignatius' College Riverview has significantly reduced their work with management and maintenance of all the accounts. In turn, this has saved them about four weeks every year – just in time savings.

*"UMS has helped us standardize our Active Directory. All of our parents and students are now consistent - and guaranteed to be consistent. Now, we have no exception to the rules. We do not accidentally miss kids in groups or parents in groups. We know that the first time an account is created, then it will work"*

## FACTS

- UMS handles more than 4,500 accounts at Saint Ignatius' College Riverview
- Significantly reduces time spent on management and maintenance of accounts



**Brett Houghton**, Head of Innovation & Technology  
Saint Ignatius' College Riverview

# ST. FRANCIS XAVIER COLLEGE

## Case



One of the core elements in UMS is automation of processes, such as creating, maintaining, and deleting accounts in the Active Directory and other systems, resulting in time- and cost savings. This is exactly what St. Francis Xavier College in Canberra, Australia, use UMS for.

Geoff Smith, Network Manager at St. Francis Xavier College, started using UMS in the beginning of 2012 for the College's approximately 1,200 students and 150 staff members. They use UMS to populate the Active Directory from their Student Management System.

*'UMS is the easiest and most robust identity management system I have seen. And big selling point for me is the support. It is excellent. Every time I want something done, it is done in a timely fashion and done well.'*

*"Very basic, you never touch it. It just works, which is the main thing I like about it. UMS has saved me at least one member of staff chasing accounts, manually creating accounts, fixing problems and issues."*

**Geoff Smith**, Network Manager,  
St. Francis Xavier College

This means that UMS on a daily basis scans their Student Management System and updates the accounts in the Active Directory. It also creates the accounts and disables them again when staff and students leave the school. The simplicity and how well it works is one of the reasons Geoff Smith enjoys using UMS.

After introducing UMS, several processes have been automated, meaning that St. Francis Xavier College is not only saving a lot of time but has also increased the productivity. This is especially visible when a new student starts at St. Francis Xavier College. When a student is registered UMS automatically creates an account for the student with the correct permissions and integrations and they can start working straight away.



**Geoff Smith**, Network Manager,  
St. Francis Xavier College

## FACTS

- UMS is short for User Management System.
- Handles 1,200 students and 150 staff members at St. Francis Xavier College
- Saves time, money and increase productivity

[WWW.INLOGIC.DK/EN](http://WWW.INLOGIC.DK/EN)



inLogic A/S | Silkeborgvej 140 | 8700 Horsens | Denmark  
Tlf. +45 42 40 88 00 | [sales@inlogic.dk](mailto:sales@inlogic.dk) | CVR nr.. 33583605